



# Peconic Bay SHOPPER



*preserving your North Fork history*

**FEBRUARY • 2019**



**ICE CUTTING**  
on East Marion Lake





# Peconic Bay SHOPPER

...preserving North Fork History

publisher/editor — Michael P. Hagerman  
art department — Rita M. Hagerman | rita.academy@gmail.com  
sales — Chris Witczak | chris.witczak2017@aol.com



*This publication is a division of Academy Printing Services, Inc.*  
42 Horton Lane - POB 848, Southold NY 11971  
PH 631.765.3346 FAX 631.765.3369  
EMAIL rita.academy@gmail.com  
Download recent issues of the Peconic Bay Shopper at:

[www.academyprintingservices.com](http://www.academyprintingservices.com)

## Reader Feedback -



We thank our readers for the responses as to the date of the above photo of Greenport that was on our December cover.

◆ Carlos DeJesus informed us that the house on the southwest corner of Main, First and Webb Streets, was built in 1931, according to State Historical Study, of Greenport in 1977. The first new hospital addition (brick building) was erected in 1938, so this photo is dated between 1931 and 1938. Carlos has an aerial view of Greenport just before the Hurricane of '38 that shows the brick building.

◆ Helen Hansen confirmed the date range because her house does not show an addition that was added 1938-39.

## On the Cover-

This Charles Meredith photo was taken on November 15, 1946 in the Southold High School Auditorium.

The production was called *The Swami of Bagdad*.

Since most of these young people are no longer young information about this play might be difficult to determine.

Look at the photo of the cast on page 11 and see if you might be able to help name some of the performers.

*Photos courtesy of Susan Tyler.*



# VALENTINE Organ Concert & Art Show

**FEBRUARY 9<sup>th</sup> ♥ 1 - 3pm**

at the Historic  
Old Methodist Church  
on Village Lane, Orient

LIMITED SEATING. Please RSVP: [oldorchardfarmstore@gmail.com](mailto:oldorchardfarmstore@gmail.com)

**OLD ORCHARD FARM STORE**

# ICE



Ice skaters on East Marion Lake.

Photo from our 2004 archives, courtesy of George Arnold of East Marion.

The following story written by Merlon Wiggin was originally published in the Peconic Bay Shopper in March of 2004. We felt these archived photos were worth sharing again.

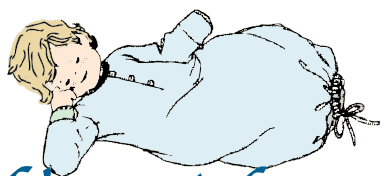
Much has been written about the history of fishing of Eastern Long Island, but it seems most people either did not remember or realized the importance of ice in the fishing industry. In this day and age we take for granted the ease of obtaining ice, whether it is from our refrigerator-freezers or from commercial ice makers. It wasn't always this way. Mechanical refrigeration and ice making technology is only a little over a hundred years old. Many of our readers will remember the Greenport ice plant that was put into operation sometime prior to World War I. If it ran night and day it could produce 100 tons of 300 pound ice cakes per day. The introduction of commercial ice making to Greenport made it practical for the offshore draggers to load up with ice before departing for the fishing grounds with each vessel taking

six to fifteen tons of ice. The plant's ice was also a principal ingredient for the successful scallop industry. The Greenport ice plant, owned and operated by Frank Barth and later by Corby Jones, originally used ammonia as a refrigerant powered by steam engine. Later updating Freon with its compressor powered by a huge two cylinder Fairbanks diesel. According to John Satkowski, who ran the ice plant for a time, the cost to produce a 300 pound cake of ice was \$4.00, with approximately 90% of it used in the fishing industry.

So, prior to all of this modern technology, where did the ice come from that was used to preserve the fish on board the Greenport area fishing boats and for shipping fish products to market? It came from our two principal fresh water lakes – Silver Lake in Greenport and especially East Marion Lake. It is



**WOW** ♥  
 It's the  
**ANNUAL**  
**WINTER**  
**SALE** ♥



*Carol's Kids Corner*

CLOTHING • HATS • BEDDING • BLANKETS • TOWELS • GIFTS & more!



We have bibs to dress baby up for every special day!

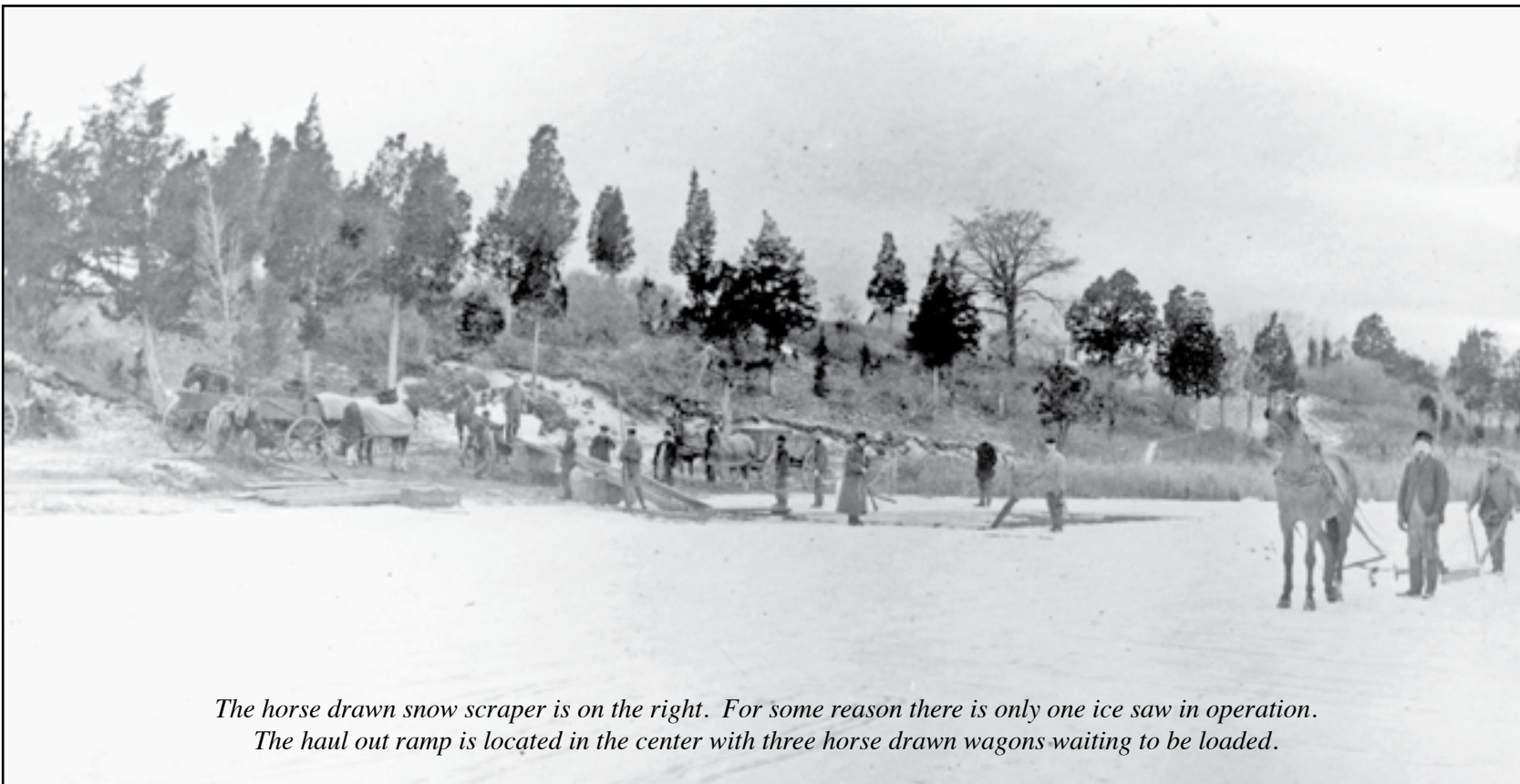


MAIN ROAD, SOUTHOLD • 765-4100 • Open 6 Days • UPS • MC/VISA



Specialty Towels, Rugs, Shower Curtains, Bath Accessories, Cozy Towels, Table Accessories and Lace Curtains for your Kitchen and Bath





The horse drawn snow scraper is on the right. For some reason there is only one ice saw in operation. The haul out ramp is located in the center with three horse drawn wagons waiting to be loaded.

doubtful that many of you readers have ever participated in an ice harvesting operation. Being from rural Maine where my family lived without electricity until after World War II, ice cutting and storage was a very important winter operation. Without it we had no summertime refrigeration, couldn't cool and store milk and butter, and most important to a teenager couldn't make ice cream on the 4<sup>th</sup> of July.

Using East Marion Lake as an example, let's follow step by step an ice harvesting operation with pictures taken, we think, in the late 1800's or the early 1900's. The first requirement was a period of cold weather in which the lake was frozen until at least a foot thick. Up in Maine we did not start ice

cutting until it was two feet thick. Thickness was determined by periodically chopping a hole in the ice and taking a measurement. According to stories handed down the next most important step was to convince the East Marion women to get off the ice, so that the men could start the ice harvesting operation. Evidently, East Marion women loved ice skating (see photo, previous page). It is interesting to note how they were dressed in their long skirts and fashionably looking hats. (Can anyone date this photo?)

If there was snow on the ice, this had to be removed prior to the start of the ice harvesting operation. This was most often accomplished by using a horse drawn wooden plow and scraper (see cover photo). The principal tool

www.FlandersHVAC.com
Think **F**landers First!

**65th ANNIVERSARY SALE!**

**Get a Complete Ductless System Installed in Less Than A Day for Only \$65/mo!**

"Thank YOU for your Support and Trust Since 1954!"

Ductless Heating AND Cooling System  
Usually Installs in Less Than a Day!

Installed for Only\*

# \$65

/mo

Ends  
February  
28th!

Super Low Monthly Price!  
No Penalty for Early Payoff!

CELEBRATE WITH US!

**WHY CHOOSE FLANDERS?** "Flanders Heating and AC is reliable and knowledgeable. Service is prompt and they do what they say they will do. Very pleasant company to do business with." - P.G., Southampton, June 2018

## Flanders

HEATING & AIR CONDITIONING

Since 1954

Call For  
24/7  
Service

100%  
Certified

Serving ALL of  
Suffolk  
County

Home Comfort  
Since 1954

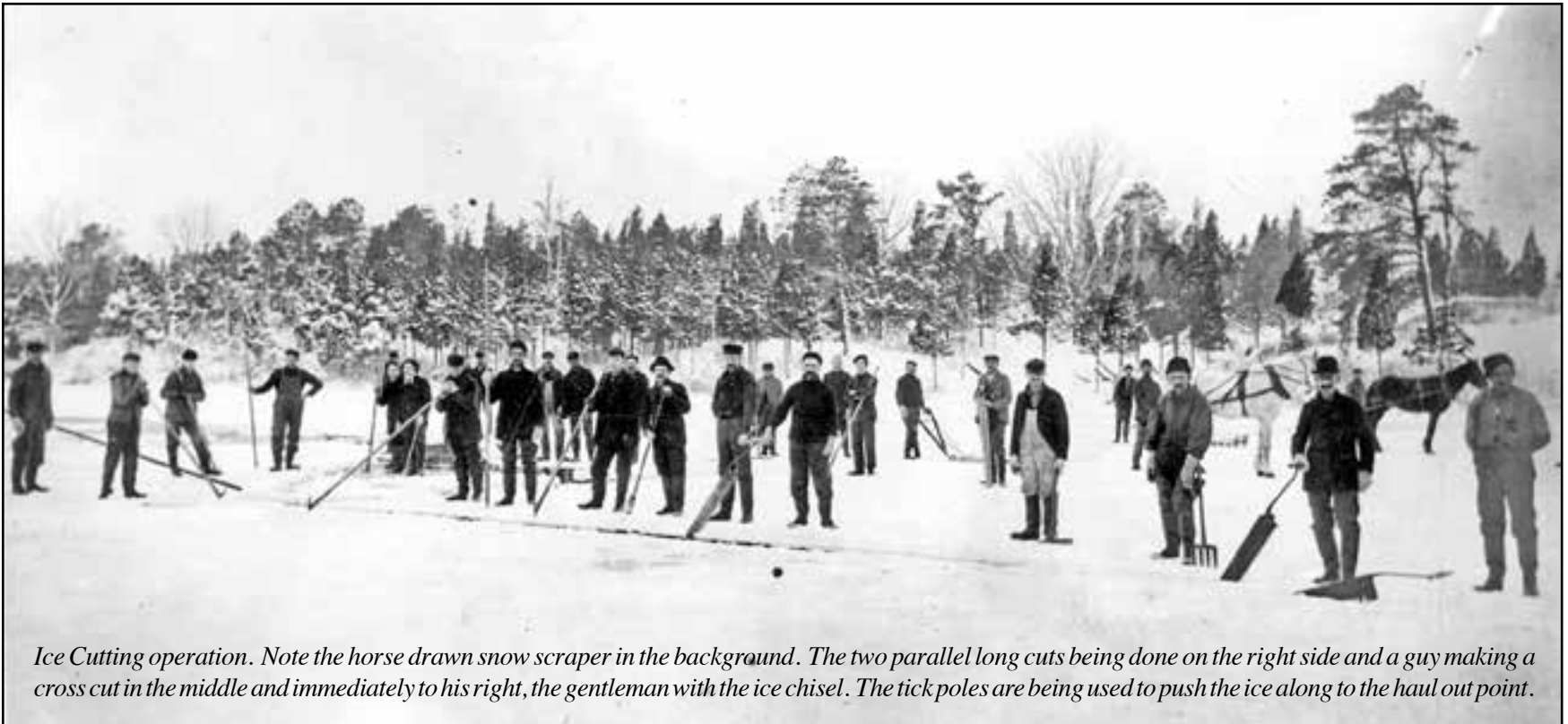
CALL FOR  
24/7  
EMERGENCY  
SERVICE!

When You Need Service, Day Or Night, Think **FLANDERS** First!

(631) 727-2760

24/7 EMERGENCY SERVICE

\*Images for Illustrative Purposes Only. Offer Applies to 1 (one) total system unit (Condenser plus Indoor Head) only. Must Qualify for Financing. Some restrictions may apply. Cannot Combine w/Other Offers. See dealer for ALL details. Expires 02/28/19

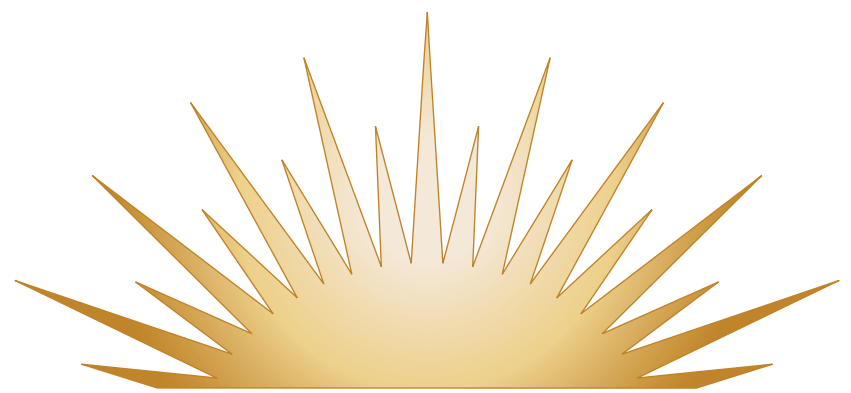


*Ice Cutting operation. Note the horse drawn snow scraper in the background. The two parallel long cuts being done on the right side and a guy making a cross cut in the middle and immediately to his right, the gentleman with the ice chisel. The tick poles are being used to push the ice along to the haul out point.*

of ice harvesting was the ice saw – a heavy saw with large teeth, five or six feet in length with cross bar type handles on the top. It took strong arms and a rugged back to pull an ice saw up and down for hours at a time. Only those of you who may have experienced ice cutting by this method could appreciate the very tiring hard work that went into the use of an ice saw. Maybe that is why in the pictures none shows a person actually cutting ice, but are mainly leaning on their ice saws.

In planning an ice cutting operation an area is cleared of snow at least one hundred feet long and lines laid out for the first two ice cuts, usually about two feet apart. Starting from a hole chopped in the ice, two parallel saw cuts are made the entire length. Because initially what is called cross cuts

could not be made (there was no opening in which to put the saw), ice cakes had to be broken off by heavy duty ice chisels. As each cake is broken off it is pushed to the “haul out” end using long pick poles similar to those used in the logging industry. After grabbing each individual cake with ice tongs, it is pulled or pushed with ice pick poles up a wooden ramp to the waiting horse drawn wagon. When the ice cakes had to be moved up a long wooden ramp into the ice house, lines with ice grapples were used. After the initial row of ice cakes have been removed, the next saw cut is made parallel to the first two, followed by another person with an ice saw sawing off each cake at a predetermined interval, usually about two feet. As these cakes float free they are pushed down to the haul out point using the pick poles and hauled



## SUFFOLK DESIGNER LIGHTING

FAMILY OWNED AND OPERATED  
FOR 54 YEARS



455 COUNTY ROAD 39A  
SOUTHAMPTON, NY 11968  
631.283.4800

*Call for a free quote on any project and installation.*

[www.suffolkdesignerlighting.com](http://www.suffolkdesignerlighting.com)



*This ramp leads up to the ice house located between East Marion Lake and the Bay.  
Note the long line with grapple on the left being used to haul the ice cakes.*

**RON  
MORIZZO**

**Kitchens & Baths <sup>INC</sup>**

**DESIGN • SALES • INSTALLATION**

**HOME IMPROVEMENTS • RENOVATIONS**

**KITCHENS • BATHROOMS • COUNTER TOPS**

**WINDOWS • DOORS • CARPENTRY**

**FLOORING: Wood • Laminate • Tile**



**631-765-5772 • [www.RMKB.net](http://www.RMKB.net)**

**VISIT OUR SHOWROOM:**

**North Rd. Commons #19**

**Route 48 & Cox Lane, Cutchogue**

Licensed & Insured  
SC #H16772  
SH #L001935



**A to Z**  
**Auto Radiator  
& Air Conditioning**

**Air Conditioning**

AUTO • TRUCK • RV & FARM • INDUSTRIAL

**Auto Radiators**

FOREIGN & DOMESTIC • TRUCK • RV • FARM • ANTIQUE AUTOS

RADIATORS & HEATERS REPAIRED & RECORD

CUSTOM WORK • ALUMINUM WELDING

A/C HOSES MADE TO ORDER

MARINE HEAT EXCHANGERS CLEANED & REPAIRED

**NOW**

**is the time to have your heating  
and cooling systems checked!**

Monday-Friday 8-5, Saturday 8-12

PH: 631-765-6849 • Fax: 631-765-6847 • Email: [a2zautoradiator@optonline.net](mailto:a2zautoradiator@optonline.net)

**Bob Andruszkiewicz**  
PROPRIETOR

Licensed & Insured • 45 Years Experience



WE PARTICIPATE IN THE LONG ISLAND FARM BUREAU PROVIDER PROGRAM



*Ice cutting days on East Marion Lake shows a horse-drawn snow scraper on the left. An ice cake is being pushed up the wooden ramp to be loaded onto the horse-drawn sleds. The ice saws were quite heavy and long (almost as tall as the man on the right).*

# O'NEILL OUTDOOR POWER



## THE SMART CHOICE.

Durable backup power for businesses and all homes. Guard against losses due to power outages with a

**BRIGGS & STRATTON®**



Parts • Labor • Travel  
Limited Warranty

### Unique Airflow Technology

- Making these models 50% quieter than most portable generators
- The unique design pushes engine exhaust out the front, directly away from your home

### Flexible Placement

- Approved for installation as close as 18" to a building

### Symphony® II Power Management System

- Customizable to your home's needs
- Automatically balances the power of your home's electrical load including high wattage items like air conditioning units and electric ovens
- Offers whole house power with a more affordable home generator

### Commercial-Grade Briggs & Stratton Vanguard™ Engine

- Powerful V-Twin OHV engine
- Easy conversion between natural gas (NG) and liquid propane vapor (LP) during installation

### Quality Clean Power

- Ensures your electronics are safely powered

### Corrosion Resistant Enclosure & Base Options:

- Automotive grade galvanized steel enclosure and base
- Aluminum enclosure and stainless steel base certified to withstand hurricane-force winds up to 175 mph
- Both enclosure materials utilize powder-coated paint for years of protection against chips and abrasions



*Life Insurance • Retirement Savings • Mutual Funds • IRAs • Annuities • College Savings Plans*



## Why did 1.3 million families refuse to buy life insurance online?

**They had an Allstate Agency they trusted to help them get it right.**

Let's sit down and talk about your life insurance needs today. I'm happy to answer questions, explain the details and help you choose the right policy for your family and budget. Life insurance is too important not to have an Allstate Agent looking out for you. Call me.



**Chris Manfredi**  
**631-765-4666**

44655 County Rd. 48  
Southold, NY 11971  
cmanfredi@allstate.com



**Allstate**®

AUTO | HOME | LIFE | RETIREMENT

Let me help with your Life & Retirement needs today.





*East Marion Lake ice house. Note the ice cakes being pushed to the long wooden ramp and being hauled up into the ice house. The ice house is obviously nearly full because of the steepness of the ramp. The gentleman on the right is pulling ice cakes down to the haul out point. He should be careful not to step back.*

out and loaded. (One of my first remembrances was measuring off each location for a cross cut and marking it with a hatchet.) These ice harvesting steps continued all day and each day until the ice houses were filled, One of the hazards of ice harvesting was the need to be especially alert as to where the ice had been removed. Chips of ice, slush, and snow would often collect and lay in the ice harvested area and obscure the boundary between the harvested area and the unharvested area. Occasionally, a worker would step on this lightly frozen surface and become an unplanned member of the Polar Bear Club.

According to local East Marion residents there were three ice houses off East Marion Lake, one of which was located where what is now Rabbit Lane and permitted the transfer of ice from the ice house directly into shallow draft trap fishing boats. To preserve the stored ice until it was needed, it was covered by sawdust, hay and straw.

*Contributions to this article published in March of 2004 were made by George Arnold, Dan Dzenkowski, Mary Beth Phillips, Carlos DeJesus, and Bob White.*

# GRATTAN'S GRINDING



*Pete Grattan, Jr.*  
Major Credit Cards

**765-4940**  
1040 Hortons Lane Southold

## SNOW BLOWERS!



Besides tree felling and lawn care, Jonsered is also making your life work with powerful leaf blowers, snow throwers and cultivators.

What better time to own one!

Jonsered®



WE STILL HAVE SNOW SHOVELS AND DE-ICER!

---

COME IN NOW BEFORE THE RUSH FOR

MOWER TUNE-UPS  
ENGINE SERVICING  
AND BLADE SHARPENING

Pre-Screened Vendors  
 NorthForkWeddings.com  
 SouthForkWeddings.com

**NORTH FORK**  
*weddings*  
**SOUTH FORK**  
 Screened & Approved

The Local Expert for  
 Weddings, Parties Getaways & Vacations  
 on the North Fork & the Hamptons

631-606-0198

SAVE BIG ON NEW 2018 and 2019 Dodge, RAM, Chrysler & Jeep Vehicles!

Did Somebody Say **RAM TRUCK MONTH? YES???**  
**YOU'LL SAVE BIG!!!**

ALL NEW LEASES!  
 GREAT REBATES AVAILABLE!

**MOTORTREND**  
 TRUCK OF THE YEAR 2019  
 THE ALL NEW 2019  
 RAM 1500 4X4

ENORMOUS AMOUNT IN-STOCK! **RAM**

**EMPLOYEE PRICING!**  
 On ALL REMAINING  
 NEW 2018'S IN-STOCK!

BRAND NEW 2018  
 RAM 2500 →  
 2 LEFT IN-STOCK!

What's **BIGGER** than **HUGE?**  
 THAT'S WHAT YOU'LL SAVE!

**MULLEN MOTORS**  
 East Main Street, SOUTHOLD • 765-3564  
 www.mullendealsoftheweek.com • www.mullenmotors.com

TRUCK MONTH RAM Jeep CHRYSLER DODGE

Employee Pricing Applies! NEW IN-STOCK! 2018 Models Only. Restrictions May Apply. See Dealer for Details. Must Qualify for Financing. Tax, Title & DMV Fees. In-Stock Vehicles Only. \*See Dealer for ALL Offer Details. Not Responsible for Unintended Damage. Expires 2/28/19

**Polywoda**  
**BEVERAGE**  
 EST. 1961  
 BEER • SODA • KEGS • IMPORTS

**100s of BEERS from around the world!**  
**VISIT OUR GROWLER STATION**  
 featuring **LONG ISLAND LOCAL BREWS ON TAP.**  
 Visit: [www.polywodabeverage.com](http://www.polywodabeverage.com) Like us on: **facebook.**  
 ...and check out our list of beers! Polywoda Beverage

**765-5011** 55560 MAIN RD • SOUTHOLD **ICE**

**LOOK FOR OUR  
 UPCOMING SEASONAL BEERS!**  
**Happy Presidents Day!**

**16+ YEARS OF PROFESSIONAL EXPERIENCE**

**Grattan's**  
 Heating and Cooling

Providing Quality Service,  
 Installation and Repair for all your  
 home heating and cooling needs.

**(631) 745-5555**  
 GrattansHVAC@gmail.com  
 — INSURED —



Please read "On Our Cover" on page 2 and see if you can help identify some of the faces in this Southold High School cast. Thank you!

# SOUTHOLD FISH MARKET

*Happy Valentine's Day!*



**STOP IN FOR PREPARED LUNCHES & DINNERS**

**SHRIMP PLATTERS!**

**HOURS:**  
M-Th 9-6, Fr-Sat 8-7, Sun 8-5

**(631) 765-3200**



64755 Main Road, Southold



**SENIOR 10% DISCOUNT THURSDAYS!**



*Happy Valentine's Day!*

**BURGERS, THIN-CRUST PIZZAS, FISH, WINGS & DAILY SPECIALS!**

**Prime Rib Tuesdays!**

**Wednesdays 7:30pm Trivia or Bingo!**

**"Burger and a Beer" Thursdays!**

OPEN Mon - Fri: 4 pm - ?, Sat - Sun: Noon - ?  
KITCHEN OPEN 5-10 pm, Fri & Sat until 11:30 pm

"Sophie's Rest" "sophiesrest"

**730 MAIN BAYVIEW • SOUTHOLD • 631.765.5700**

# WHOLESALE CUSTOM PICTURE FRAMING



## LARGE FORMAT PRINTING

**PHOTO RESTORATIONS • ENLARGEMENTS • DIGITAL SCANNING • REPRODUCTIONS**

*We work from digital files, original photos, negatives or slides.*

PRINTING FOR PROFESSIONAL AND AMATEUR PHOTOGRAPHERS

FINE ART PRINTING FOR PROFESSIONAL AND AMATEUR ARTISTS

**SCULPTURE  
& ARTIFACT  
REPAIRS &  
RESTORATIONS**



**CUSTOM  
WOOD  
& PLASTER  
MOULDINGS**

# Greenport Art & Design Emporium

ART GALLERY | PICTURE FRAMING | PHOTO LAB | DIGITAL PRODUCTION FACILITY

**67380 MAIN RD • GREENPORT • 631-246-9091 • Thurs-Mon 10am-6pm**

[www.greenportartanddesignemporium.com](http://www.greenportartanddesignemporium.com)



# Calendar of Events

## LIST YOUR EVENTS!

Our monthly listings are free to all non-profit organizations and fundraising events.

Email: [rita.academy@gmail.com](mailto:rita.academy@gmail.com)

### WINTER LECTURE SERIES: FRIDAY FEBRUARY 8

#### "MENHADEN FISHING ON EASTERN LONG ISLAND"

Southold Historical Society in partnership with Peconic Landing continues its Winter Lecture Series with "Menhaden Fishing on Eastern Long Island", a talk by Amy Folk, at 4pm in the Peconic Landing Auditorium, 1500 Brecknock Rd., Greenport.

From the earliest days of settlement in Southold, menhaden, known locally as "bunker", have played an important role in the lives of residents. Whether cooked and eaten or spread over and plowed into fields as fertilizer, the fish has been ever present in the daily lived of residents – until recently. Amy Folk, who is the Southold Historical Society Manager of Collections, Southold Town Historian and the Oysterponds Historical Society, will talk about the importance of the menhaden industry on the North Fork including its decline.

Admission is free. RSVP is recommended by calling 631.765.5500. For more info on this event or any other society programs, call 631.765.5500 or visit [www.southoldhistorical.org](http://www.southoldhistorical.org).

### ORGAN CONCERT SATURDAY FEBRUARY 9

Free Community Valentine Organ Concert at the Old Methodist Church, Village Lane, Orient. See page 2 in this issue for more information.

### VALENTINE EXTRAVAGANZA SATURDAY FEBRUARY 9

The Old Town Arts & Crafts Guild in Cutchogue is hosting a Valentine Extravaganza on at the Peconic Recreation Center, 970 Peconic Lane, Peconic, from 9am - 4pm. The show features antiques, fine art, photography, pottery, jewelry, quilted, knitted, crocheted items, wood crafts collectibles, vintage treasures and more! Free admission. Refreshments available. [www.oldtownartsguild.org](http://www.oldtownartsguild.org); [oldtownguild@aol.com](mailto:oldtownguild@aol.com); or call 631-734-6382.



### SOUTHOLD LIONS CLUB EVENTS

For more information please visit [southoldlions.org](http://southoldlions.org)

- February 9** NYS Disaster Preparedness Training Program 10am  
Southold High School Auditorium (Registration required)
- March 3** Savory Sunday at Lucharito's, Greenport
- April 7** Savory Sunday at Jeni's Main Street Bistro, Southold
- May 5** Savory Sunday at Salamander's in Greenport

### HALLOCK STATE PARK PRESERVE FREE EVENTS

6062 Sound Avenue, Jamesport (631) 315-5475 or Email: [kevin.kelly@parks.ny.gov](mailto:kevin.kelly@parks.ny.gov)

**Saturday, February 09, Basketweavers' Guild of Eastern Long Island** 10am: Join the basketweavers for their monthly meeting at the Hallock State Park Preserve Visitor Center Community Room. New members welcome.

**Saturday, February 16 Whales, Dolphins, Porpoises in New York** Noon to 1pm. Riverhead Library Adult Programs features this presentation by the Atlantic Marine Conservation Society on cetaceans of the New York Waters. The lecture will discuss the migration and behavior of these interesting creatures, as observed off the shores of Long Island, as well as the threats that they face from human activity during their time in our waters. There will also be a discussion on how the community can work with AMCS to protect these animals and provide them with a safer environment. If the weather is nice, a beach walk and clean-up will follow at the Hallock State Pond Preserve Beach. For reservations, please contact Riverhead Library Adult Programs at (631) 727-3228.

### "LOCAL EATS FOR A LOCAL CAUSE" SUNDAY FEBRUARY 10

Join your friends and neighbors for an afternoon or night of good food and atmosphere all while supporting your local museum. Southold Historical Society is proud to be partnering with Front Street Station Restaurant, 212 Front Street, Greenport from noon to 9pm. Come for lunch or dinner. Front Street Station is generously donating 15% of the food bills to Southold Historical Society. Be sure to RSVP online at <https://www.groupraise.com/events/81803-southold-historical-society-at-front-street-station>

### AUTO SWAP MEET, CAR CORRAL & FLEA MARKET SUNDAY FEB. 10

The 20th Annual Heated, Indoor, Automotive Swap Meet, Car Corral & Flea Market sponsored by the Peconic Bay Region, AACA will be held at the Southold Town Recreation Center, 970 Peconic Lane, Peconic. Tables \$30, Car Corral \$20, Spectators \$3. Info: Bob Barauskas, Meet Chairman, Tel. 631-495-8619, email [Bob25stude@aol.com](mailto:Bob25stude@aol.com)

### WOMEN'S HEALTH FAIR AND FORUM TUESDAY FEBRUARY 12

This informational Women's Health Fair and Forum is presented by CAST and the Eastern Long Island Hospital to learn about important women's health topics and women's health resources available to all women, close to home on the North Fork. The workshop will be held from 5 to 7pm at the ELIH Conference Room. ELIH is located at 201 Manor Place, Greenport. For more information call ELIH at 631 477-5164.

### KNITTING CIRCLE MEETINGS THURSDAYS FEBRUARY 14 & 28

The Southold Historical Society Knitting Circle meets at 1:30pm at the Prince Building, 54325 Main Road, Southold. Cozy up and get creative during the winter months and all year long! No prior registration is required; just bring your crafting supplies and yourself. We ask that our crafters kindly refrain from bringing food or beverages (other than water) to meetings, as they are held in our conference room which is overflowing with beautiful artwork and pieces from our collection. The conference room is on the second floor of our Prince Building which is accessible by a stair lift. For more info call 631.765.5500.

### NFRS CINEMATIC SERIES SATURDAY, FEBRUARY 23

NFRS Cinematic Series begins at 7:30pm at Cutchogue Presbyterian Church with Theodore Bikel: In the Shoes of Sholom Aleichem, Documentary | USA | In English  
The stories of two beloved Jewish icons are woven together in this enchanting documentary: Sholom Aleichem, the great Jewish storyteller and Theodore Bikel- troubadour, actor and the most popular interpreter of Aleichem's work. Based on Bikel's acclaimed stage play "Sholom Aleichem: Laughter Through Tears." The two men have much in common-- wisdom, humor, humanity, massive talent, and a gift for Yiddish. Theodore Bikel, the unstoppable performer whose career spanned more than 150 screen roles (including an Oscar-nominated turn in The Defiant Ones) and countless stage and musical productions, was also the foremost interpreter of Sholom Aleichem's work. A pioneer of modern Jewish literature who championed and luxuriated in the Yiddish language, Sholom Aleichem created dozens of indelible characters, including Tevye the Milkman, Motl the Cantor's Son, and Menachem Mendl--"shtetl Jews" for whom humor and pathos were two sides of the same Yiddish coin. Join us for a lovely evening and light refreshments. \$5pp. [northforkreformsynagogue.org](http://northforkreformsynagogue.org)

### AMERICAN LEGION DINNER & SOCIAL TUESDAY FEBRUARY 26

The next American Legion Dinner and Social will be held at our American Legion Hall in Southold.. Bar opens at 5:30pm with dinner being served at 6:30pm. Cost is only \$10, but you must call 631-765-2276 to reserve your spot. Come and enjoy a wonderful time. This dinner is open to the public and supports the Vets and the American Legion Hall.

### ASTRONOMY LECTURE: From Deep Sea To Space FRIDAY MARCH 1

What technology is used on the International Space Station and how are astronauts trained to use it? How are objects like space capsules recovered from the sea? In what kind of projects does the Department of Defense and the Office of Naval Research use deep sea divers, submersibles and robotics? In this illustrated talk, former NASA engineer, John Bouvier, will discuss his work training astronauts, developing technologies used in deep sea and on-orbit space exploration, and his own involvement in missions such as the recovery of the Liberty Bell 7, the Mercury 11 space capsule piloted by astronaut Virgil "Gus" Grissom, and more. 7:30-9pm | Free. No registration is necessary. ORGANIZER: Montauk Observatory CO-SPONSOR: School of Marine & Atmospheric Sciences, Stony Brook University LOCATION: Chancellors Hall, Stony Brook University Southampton Campus, 239 Montauk Highway, Southampton NY 11968

INFO: [www.MontaukObservatory.com](http://www.MontaukObservatory.com) or email [MontaukObservatory@gmail.com](mailto:MontaukObservatory@gmail.com)

### "THE STORY OF LONG BEACH BAR LIGHTHOUSE (BUG LIGHT)" TUESDAY MARCH 5

Southold Historical Society in partnership with Peconic Landing continues its Winter Lecture Series on with "The Story of Long Beach Bar Lighthouse (Bug Light) Tracing the History of this Welcoming Beacon from the 1870's to the Present." at 4pm in the Peconic Landing Auditorium, 1500 Brecknock Rd. Greenport. The talk will be given by Ted Webb who currently holds positions as chairman of Southold Town Historic Preservation Commission, chairman of Brecknock Hall Foundation, and secretary of Peconic Landing Board of Trustees. Ted also is the narrator of Offshore Lighthouse Cruises. This presentation will cover the history of Bug Light since 1870 and will include a viewing of the video: "The Re-Building of Bug Light". Admission is free. RSVP is recommended by calling 631.765.5500. For more info call 631.765.5500 or visit [www.southoldhistorical.org](http://www.southoldhistorical.org).

**North Fork Taps & Corks**  
2015

A warm, friendly place  
with a GREAT variety of craft beer and local wine.

Mon-Thurs 4pm-12, Fri-Sun noon-12 • BYOFood anytime!  
53345 MAIN RD (in Feather Hill) SOUTHOLD • 631.876.5246

BURGER THURSDAYS  
with Grace & Grit

## Greenport Drugs

Best Fast Service —

- most Rx's filled in **10 minutes**
- **least expensive** on the NF
- **easy transfer** of prescriptions
- **always** easy parking
- FREE delivery...and **always Free Advice!**

Lester Eisenberg, RPh

[greenportdrugs@gmail.com](mailto:greenportdrugs@gmail.com)

Mention this ad for **20% OFF ALL WINDMILL VITAMINS**

74825 Main Road + Greenport + 631-477-1222

## What's Happening



### Eastern Long Island Hospital Cutting Edge Care With a Personal Touch

## 2019 Events Mark Your Calendar

### Rock Your Heart Out!

**Saturday, February 9, 2019**

Support the **heart** of ELIH, our ER  
6 PM - 10PM

Refreshments, Food, Dancing, &  
Live Entertainment by POC  
Greenport Harbor Brewery  
Peconic, NY



### 27th Annual Golf Classic

**Monday, June 10, 2019**

2019 Honorees: *Jon Divello &  
Stanley Lomangino of Mattituck  
Environmental Services*  
Choice of Shotgun Starts: AM or PM  
North Fork Country Club  
Cutchogue, NY



### Annual ELIH Gala

**Saturday, August 10, 2019**

Summer Evening on the Farm  
5 PM - 9 PM  
Dinner and Dancing, Live & Silent  
Auction, Luxury Raffle  
Mattituck Environmental Services  
Farm, Cutchogue, NY



### 3rd Annual 5K Walk/Run

**Sunday, September 9, 2019**

Join us on the track to recovery  
5K Walk/Run Start Time: 8 AM  
Orient Beach State Park  
Orient, NY



For more information, contact the  
ELIH Foundation Office at 631.477.5164



201 Manor Place, Greenport, NY 11944  
631.477.1000 · www.ELIH.org

## CUTCHOGUE NEW SUFFOLK FREE LIBRARY

www.cutchoguelib.org 631-734-6360

**ART EXHIBIT** - Old Town Arts & Guild Painters

### ADULT PROGRAMS:

**Sat. Feb. 9, 2-3pm, A READING OF LOVE LETTERS.** Join us for this special event.  
**Tuesday, February 12, 2-3pm, CONVERSATIONS ON FACTS, VALUES AND JUSTICE,** -The Mind & Brain, Registration requested.  
**Wednesday, February 13, 6:30pm TIPS WOMEN CAN DO TO KEEP THEIR HEART HEALTHY.** Registration required space limited.  
**Tues., Feb. 19, 1-3pm, WOVEN NECKLACE** Registration required. Material fee: \$20.  
**Wednesday, February 20, 1pm, BIRDS OF PREY** Registration required.  
**Thursday, February 21, 10-1am, BOOK DISCUSSION: I Know Why the Caged Bird Sings** by Maya Angelou. No registration required.  
**Sunday, February 24, 2pm, HUNGARIAN DINNER** Must register. Material fee: \$7.  
**Saturday, March 2, 2pm Celebrating Women's Voices in Music** with acclaimed singer songwriter Sherri Miller. Concert held in the Presbyterian Church in Southold.

### CHILDREN PROGRAMS:

**Mon, Feb 11, 9:30-10:15am, JUMP BUNCH-PADDLE SPORTS.** Ages 2-5. Please register.  
**Tuesday, February 12, 9:30-10:30am TOTS, TOYS, & TALES.** Children 0-36mos.  
**Wednesday February 13, 4-7pm MAKER SPACE CRAFTS.** The Day it Rained Hearts. For the whole family to enjoy!  
**Thursday February 14, 4:30-5:15pm 4's & 5's LEARNING TIME.** Love from the Very Hungry Caterpillar.  
**Friday, February 15, 4:30-5:15pm 6's, 7's & 8's GROWING READERS.**  
**Sat., Feb. 16, 1pm ZUMBA INTRO CLASS FOR KIDS.** Ages 5-8. Please register.  
**Tues., Feb. 19, all day. WINTER STEAM WEEKS.** Dominoes. All ages. No registration.  
**Tuesday, February 19, 9:30am-10:30am TOTS, TOYS, & TALES.** Children 0-36mos.  
**Wed. Feb. 20, 1pm OWLS & HAWKS w/Evelyn Alexander, Wildlife Rescue.** For families.  
**Thursday, February 21, 4:00pm LEGO-MANIA.** Grades 3-6. Registration requested.  
**Fri., Feb. 22, 1pm MASTER CHEF SPAGHETTI CHALLENGE** Grades 2-5. Register.  
**Friday, February 22, 4pm FRIDAY FAMILY FLICKS.** Smallfoot PG. Children ages 9 & under must be accompanied by an adult. No registration required. Refreshments served.  
**Sat., February 23, 1pm SAFE HAVEN ANIMAL ADOPTION EVENT.** For families.  
**Monday, February 25, 6-7pm PJ STORYTIME** Ages 3-8. Please register.  
**Tues., February 26, 9:30-10:30am TOTS, TOYS & TALES** Children 0-36 mos. Register.  
**Wed., Feb. 27, 10-10:30am EARLY LITERACY FOR 2's & 3's** Ages 2-3. Please register.  
**Monday, March 4, 4-5pm, Homework Help** with Emily Steinbuch, Grades K-3, Register.  
**Tuesday, March 5, 9:30am, Tots, Toys & Tales,** ages 0-36mos, please register.  
**Wed., Mar. 6, 4-5pm, Reading to Teddy the Therapy Dog,** grades K+. Please register.

### TWEENS (Grades 5-8):

**Dec.-Feb. Great Grades Raffle.** Did you receive an A on an assignment, exam, or project? Show a librarian & receive a raffle ticket for a chance to win a \$25 gift certificate to Good Food in Mattituck. Drawing held March 1st!  
**Tuesday, February 12, 6-7pm MAKERSPACE: LIGHT UP CARD!**  
**Wednesday, February 27, 6-7pm MINI PANCAKE KABOBS** National Pancake Day!

### TWEENS & TEENS:

**Saturday, February 9, 1-2pm ANIMAL ACTION: CATNIP FELT MICE.** Make a felt mouse, toy filled with catnip. 1 hour of community. Service granted.  
**Thursday, March 7, 6-7pm, 3D Pens,** Register.  
**TEEN CENTRAL: Grades (7-12). Register.**  
**Sundays, February 10, 17, & 24, 1-3pm SAT PREP CLASSES** Program fee: \$75 due at registration.  
**Fri., February 15, 6-7:30pm CURE FOR THE WINTER BLUES MOVIE:** Alpha PG-13  
**Thursday, February 21, 1-2pm KINDNESS CARDS FOR VETERANS** 1 hour community service granted.

### FRIENDS' PROGRAMS:

**Fri., February 22, 6pm ACOUSTIC JAM SESSIONS.** All instruments & ages welcome!

*Academy Printing*  
SERVICES INC.

www.academyprintingservices.com  
765-3346 • M-F 8-5, SAT 9-12  
42 HORTON LANE, SOUTHOLD

**HOEY'S  
CUSTOM CANVAS**

Deck • Patio • Window  
Awnings • Navy Tops • Side  
Curtains • Bimini Enclosures  
Marine Upholstery

**Cox and Route 48, Cutchogue  
631-734-5900**

*Chandelier  
and Lamp*  
RESTORATION  
& REPAIR

**SUFFOLK DESIGNER LIGHTING**  
631.283.4800  
www.suffolkdesignerlighting.com

*Southold Barber Shop*

631-765-8052

*Hand crafted haircuts*

9:30-6pm M-F, 9:30-5:30pm Sat, 10-3:30pm Sun  
@southoldbarber  
56025 Main Road (Rte 25), Southold NY 11971



**“How to Use a Chart” boating seminar**  
**10:00am Mar. 2nd at West Marine in Riverhead.**  
 Call 631-725-3679 or visit [www.PBPS.us](http://www.PBPS.us)  
**\$35.00**  
 Teaching Safe Boating Since 1914



**America's Boating Course**  
**8am March 9th 2019 at Pace's (Strong's Water Club) in Mattituck**  
 Call 631-725-3679 or visit [www.PBPS.us](http://www.PBPS.us)  
**\$50.00**  
 Teaching Safe Boating Since 1914

**‘GREAT MUSIC SUNDAY’ SERIES, MARCH 10**

Basically Baroque, a quartet of local professional musicians, will perform in the fourth annual Great Music Sunday concert at 3pm in the community room of Congregation Tifereth Israel, the synagogue on Fourth Street in Greenport.

The Great Music Sunday series brings professionally trained musicians to local audiences. This year's program will include works by JS Bach, Loeillet, Quantz and Vivaldi, which covers compositions from the German, French and Italian Baroque periods. A lively question and answer session following the concert provides an opportunity to get to know the musicians and to learn how music has influenced their lives.

The members of the quartet met here on the North Fork in 1995 through their shared interest in Baroque music, and have been performing together since that time. The quartet's appearances are eagerly anticipated events with local audiences. Members of the quartet are Linda Betjeman, keyboard; Bill Packard, flute; Dan Skabeikis, violin; and Jeannie Woelker, cello.

The community room at the synagogue is accessible to the handicapped. There is no charge for the concert, but a free-will offering would be appreciated. For more information please call the synagogue at 631-477-0232.

**EASTERN LONG ISLAND HOSPITAL**

201 Manor Place, Greenport, New York 11944 • 631-477-5164

**Rock Your Heart Out: Saturday, February 9, 6-10pm**

Support the heart of ELIH by joining us at the Greenport Harbor Brewery, 42155 Main Road, Peconic, for an evening of refreshments, food, raffle prizes, live entertainment, and lots of dancing! Live music by POC, featuring ELIH's own Dr. Lawrence Schiff, Dr. Ryan Zapata, and John Fazio, CRNA. Tickets are \$60 per person, \$100 per couple. For more info and to purchase your tickets, please call the ELIH Foundation Office at 631-477-5164.

**Informational Women's Health Fair & Forum: Tuesday, February 12, 5-7pm**

Presented by CAST & ELIH. Location: ELIH Conference Room  
 According to results of New York State's Community Health Needs Assessment, women's health is one of the top concerns among residents of the North Fork and Shelter Island. Please join us to learn more about important women's health topics and women's health resources that are available to you, close to home on the North Fork of Long Island. Light refreshments and snacks will be served. Call for more info.

**New Mastery in General Surgery Fellowship at ELIH: Tuesday, February 19, 4pm**

Location: Peconic Landing, 1500 Brecknock Road, Greenport, NY  
 Join Stony Brook Medicine's Dr. Samer Sbayi to learn about how Stony Brook and ELIH are collaborating to enhance your local Surgical Center of Excellence with new specialized services and the Mastery in General Surgery Fellowship Curriculum. For more info and to register, please call 631.477.5164.

**ART EXHIBIT SATURDAYS THROUGH MARCH 16**

Pseudonym, an exhibition of paintings, collage, photography, and the written word by a group of fictitious artists who nevertheless take their work very seriously is currently on view Saturdays from noon-2pm until March 16 at Glen Hansen Studio, 1560 Youngs Avenue, Southold. There will be a closing party on Sunday March 17 from 2-5pm. Additional appointments can be made until March 17th.



**PARTICIPATING ARTISTS:**

**Lucy Dewitt** is the creation of an artist most known for decades of working within the arena of landscape painting.

**Hans Gelb** is an abstract painter created by an artist with a long career of making hyper-realist representational paintings, often of famous buildings and facades in New York City.

**Frankie Neptune**, well Frankie is just happy to still be alive after 20 years as a New York City cop during the 80s and 90's and his photographs often carry the grit of that experience.

**JD Plummer** writes under a pseudonym he wishes to remain undisclosed, but is also a pseudonym himself so no one is really sure of who he is. Either way, he writes with a poetry and irony that can be both tragic and comic. For further information or to make appointments please contact: Glen Hansen (347) 675-2793—hansenarts@aol.com or Adam Straus (631) 727-6191—adamstrauss57@aol.c



**TOP RATED ON THE NORTH FORK**  
 WALK TO AWARD WINNING WINERIES & RESTAURANTS  
 CLOSE TO BEACHES SPAS AND SHOPPING  
 OPEN ALL YEAR  
 1399 MAIN ROAD, JAMESPORT, NY 631-722-4824  
 LOWEST RATE ALWAYS ON DUNCANINN.COM



**HOME MADE FOCACCIA SANDWICHES**  
**SALADS • HEROS • PIZZA • PASTA**  
 REGULAR AND CATERING MENUS ARE AVAILABLE ONLINE  
**ESPRESSONORTHFORK.COM**  
**631-298-8910**  
 13520 MAIN ROAD, MATTITUCK



- Large Selection of Local and International Wines
- Half Case and Full Case Discounts
- Free Wine Tastings Every Weekend
- Gift Wrapping and Gift Baskets

[www.greenportwinesandspirits.com](http://www.greenportwinesandspirits.com)  
**WE DELIVER!**  
 631-477-6701 • 132 Front St, across from carousel



**COOK TRAVEL INC.**  
 FULL SERVICE AGENCY  
**KATHY RICHARDS, Manager**  
 kathy@cooktravel.net • 631.477.3400  
 132 Front St., Greenport NY 11944



**Donna's Country Clipper**  
*All Dog Breed Grooming*  
**DONNA LOTT**  
 Professional Groomer  
**RTE 25/MAIN ROAD SOUTHOLD**  
**631.765.4166**  
 DONNAS COUNTRY CLIPPER



**fit-foods**  
 Natural Food Store  
 natural • organic • gluten-free  
 dairy free • vegan • **CBD**  
 Whole30 • Paleo  
**631-765-8199**  
 @fitfoodsnofo  
 46025 County RD 48, Southold



**Erik's**  
 great breakfasts...  
 delicious aromatic coffee  
 ...awesome lunch!  
**(631) 765-6264**  
 CORNER OF RT. 48 & HORTON LANE



**RICH HARVEST**  
 WINES AND LIQUORS  
**MENTION THIS AD:**  
 ...and get **10%** off your wine purchase  
 Purchase 4 bottles and get a **Free Wine & Dine Tote**  
 Free Wine Tasting every weekend.  
**CHECK OUT OUR WEBSITE FOR OUR WEEKLY SPECIALS:**  
[www.RichHarvestWines.com](http://www.RichHarvestWines.com) **631-298-8160**  
 13325 Main Rd, Mattituck... *Just east of Love Lane*

## SOUTHOLD LIBRARY

All programs are held at the Southold Presbyterian Church unless noted.

## EVENTS

**Saturday, February 23, 1pm. Meet and greet Joel Reitman**, local author of "What Lies Below: A Tim Cullen Mystery", a story of government secrets whose truth lies hidden in a state park in Montauk and involves the lost experiments of Nikola Tesla. Light refreshments included. Plan to join us! Call 631-765-2077 to register

**Sunday, February 24, 2pm. Songs and Tunes of Ireland**, performed by John Corr. A grand way to celebrate Saint Patrick's Day! Come experience traditional Irish ballads and tunes blended with comedic tunes and entertaining stories. John sings and plays banjo, guitar, tin whistle, bodhran, and spoons! Light refreshments. Call 631-765-2077 to register

**Saturday, March 2, 2pm Celebrating Women's Voices in Music.** In celebration of Women's History Month, NYC-based acclaimed singer-songwriter Sheri Miller will sing a wide range of popular classic favorites, sung by or written by women. From Judy Garland and Ella Fitzgerald, to Patsy Cline and Eva Cassidy, Sheri Miller will delight with her voice and guitar accompaniment. Sheri has collaborated with Grammy Award-winning songwriters and will be releasing new recordings this year. Sponsored by the Cutchogue and Southold Libraries. Call 631-765-2077 to register.

## BABIES &amp; TODDLERS/PRESCHOOL

**Playgroup, Southold Mothers' Club:** Wednesdays thru February 27 (except 2/20) 10-11am - Infant to age 4 with an adult. Come play with the toys in the Southold Presbyterian Church nursery and make new friends.

**Storytime Yoga:** Miss Mary Hasel, 10-10:45am Fridays February 8, March 1, 8, & 15 18 months-4 years with an adult. \$20 for all classes. Join Miss Mary for stories, bending, and stretchin.

**Romp & Rhyme:** Miss Dana, 10-10:30am Mondays thru March 25 (except 2/18 and 3/4) for ages 12-30 months. Special storytelling talent, fun with songs and nursery rhymes. There is always time for free play too.

**Listen, Laugh, & Learn:** Miss Dana, 10-10:30am Mondays thru March 25 (except 2/18 and 3/4) for ages 2 1/2 -4 years old. A shared story, beautifully read, followed by early literacy interactive activities focusing on arts and crafts, science, and games. Registration is required.

**The Great Playdate - March Madness Basketball** with Jumpbunch Saturday, March 30 11am-12pm. Ages 3-6. North Fork little ones are all invited to play together as a team at this energetic and fun program! Winkie Schultz will coach us on basketball and how to play. Hang out with our friends from the Cutchogue-New Suffolk and Floyd Memorial Libraries. Registration is required.

## SCHOOL AGE

**Tuesday February 12 Chess Club**, 4-5pm, Grades 3 -7. Enjoy one of the oldest games in history with your friends and peers. Beginners to experts are welcome! Come to learn, pick up new strategies, or challenge the Librarian. Come to one or all sessions.

**Thursday, February 14 Valentine's Day Flower Arrangement** Grades 3-6, 4-4:45pm with Christine Harmon. Create a beautiful floral arrangement with carnations and baby's breath for your parents, a friend, or yourself!

**Friday, February 15 Chinese New Year Dumplings** Family program from 4-5:30pm

with Maureen Radigan. \$5 per person. Celebrate the Chinese New Year by learning the art of making delicious dumplings. Take your tasty dumplings home.

## Winter Break February 19-22

## GRADES K-2

**Family Lego Club/Lego Block Party** Tuesday-Friday, 9:30-10:30am. Build and create using the Library's Legos.

**Making Playdough** Tuesday, February 19, 11:30-12:15pm. Enjoy a snow-themed story and learn to make playdough.

**Snow Shenanigans** Thursday, February 21, 11:30-12:15pm. Fun in the form of snow! Create snowball shooters, perform an exploding snowman experiment, and enjoy snow cones.

## GRADES 3-7

**Pretzel Making** Tuesday, February 19, 3-4pm. Everybody loves pretzels, especially when they're homemade. Learn how to make the dough, knead and shape it into the classic pretzel twist before baking. Then enjoy eating what you made!

**Bristlebot Making** with Ryan Deerkoski, Miss Dana and Miss Penny, Thursday, February 21 from 3-5pm. Make a Bristlebot, name your Bristlebot and then help make the arena for the Bristlebot contest on Friday!

**Bristlebot Contest!** Friday, February 22, 3-4pm. Compete with your friends and peers for the fastest, the most creative and most productive Bristlebots. Prizes awarded!

**LIBRARY VISITS FOR HOMESCHOOLERS** Friday March 1, 2-4pm. All Ages All Homeschooling families are invited to come visit Miss Dana and Miss Penny! We will meet once a month to enjoy activities such as community service projects, poetry/art shows, and show-and-tell. We will have a hands on science fair. There will also be time for an open discussion on any ideas you may have for the rest of the year.

## TEEN PROGRAMS

**Saturday, February 9 and Saturday, March 30 Dungeons & Dragons** 12-4pm for Grades 6 and up. Calling all D&D players! Join us for an afternoon of epic adventure with dragons, monsters, wizards, dangerous quests, luck of the dice, and your own creative imagination! Beginners are welcome. Please arrive promptly to allow time to develop your character. Refreshments provided.

**SAT PREP at the Cutchogue New Suffolk Library** Sundays: February 10, 17, 24 & March 3 from 1-3pm. Open to all North Fork High School students. Learn skills and strategies to help raise your scores with this 8-hour course. Registration required. Please call Cutchogue Library at 631-734-6360. Fee: \$75 due at registration.

**Thursday, February 28 Self Defense Class** Alex Vamos, Mixed Martial Arts Instructor 6-7pm, Grades 7 to adult. An evening of self defense and safety training that includes awareness, risk reduction, posture, and physical skills. Dress in comfortable clothing.

**Friday March 1st OPEN MIC NIGHT!** 7-9pm. Grades 7 and up. Share your musical talent, your acting talent, your improvisational talent, or your stand-up comic talent! The stage and venue are set up "coffee house" style. Mics, speakers, lights, and a grand piano available for use! Come join in the fun whether you're on stage or in the audience listening and supporting your peers.

the north fork box  
with love from nofo

Valentine's Day Edition  
is now available!  
And it's the perfect match.

@thenorthforkbox  
(631) 333 2271  
www.thenorthforkbox.com

#SOUTHOLDSTRONG explore the possibilities

FITNESS ADVANTAGE

CROSSFIT north tribe

www.fitnessadvantagenf.com  
www.crossfitnorthtribe.com

RTE 48 • SOUTHOLD

CECILY'S LOVE LANE GALLERY HAS MOVED!

look for

JAMESPORT ART & FRAMING

Mon-Tue-Thur-Fri 10-5, Sat 10-3

Our new address is

1572 MAIN ROAD, JAMESPORT NY 11947  
(631) 298-8610

Salone Deicapelli  
HAIR SALON

Experience the latest in cutting edge techniques  
and flawless hair coloring for men and women.

www.salonedaicapelli.com  
56475 Main Rd, Bldg B • Southold • 631-765-6363



## MATTITUCK-LAUREL LIBRARY

631-298-4134 • www.mattlibrary.org

**Sun., Feb. 10, 2pm In Love with "I Love Lucy Show".** Learn how Desi Arnaz and Lucille Ball met, their battles with CBS and the ultimate creation of Desilu Studios in another exciting presentation by Sal St. George. All welcome. Register. FREE.

**Mon., Feb. 11, 1pm Begin with Books** for ages 2-3 years (with caregiver). Enjoy your first story time with your toddler and make a craft. Registration is required. FREE.

**Mon., Feb. 11, 6pm Library Board of Trustees Meeting.** Open to the public.

**Tues. Feb. 12, 10:30am Babies Boogie** for ages 3-24 mo. (with caregiver). Enjoy this high-energy, interactive movement and music program. Registration required. FREE.

**Tues. Feb. 12, 11:30am Toddlers Tango** for ages 25mo.-3yrs. (with caregiver). A high energy experience with fun musical props. Registration is required. FREE.

**Tues. Feb. 12, 4pm A Sweet Ride** for grades 4-6. Design your own vehicle using different candies. Registration is required. FREE.

**Wed., Feb. 13, 4pm Fun in the Sun** for grades K-1. It may be Winter, but enjoy Summer fun activities. Registration is required. FREE.

**Thurs., Feb. 14, 10am Parent/Child Workshop.** For ages 18-36mo. (with caregiver). Spend quality time through play and art activities. Registration is required. FREE.

**Thurs., Feb. 14, 1pm Fishing Fun Storytime** for ages 4-5 preschool. Winter is cold, stories are warm. Enjoy picture books, action songs, magnetic board activities, art projects and films. Registration is required. FREE.

**Fri., Feb. 15, 1:30pm FILM: The Bookshop** (2017 PG) England 1959. In a small East Anglian town, Florence Green decides, against polite but ruthless local opposition, to open a bookshop. FREE.

**Fri., Feb. 15, 4:15pm Minecraft PVP** for grades 4-6. Join other players and test your Minecraft skills. Registration is required. FREE.

**Sun., Feb. 17, 2pm CONCERT: Something Romantic** with Mitch Kahn. Explore the ups and downs of that silly little thing called love with songs by Cole Porter, Jacques Brel, Kurt Weill, Andrew Lloyd Webber, the Gershwins, Rodgers & Hart, Ned Jones, Hoagy Carmichael, George David Weiss, Neil Sedaka and Billy Joel – just some of the composers whose work you will enjoy. All are welcome. FREE.

**Tues., Feb. 19, 11am "I Shall Be Good Health to You": 1819-2019 Whitman Bicentennial Celebration.** He was the son of American soil, a child of its hope, America's unwavering champion and the creator of America's own poetic voice, a voice to be reckoned with. Join Jerry Matovcik in an engaging PowerPoint celebration of Whitman's life and poems. All are welcome. Register at the Circulation Desk. FREE.

**Tues., Feb. 19, 1:30-3pm Health Insurance Counseling.** Individual, confidential, accurate info and guidance for seniors, and other Medicare eligible persons, sponsored by the SC Office for the Aging. Call the circulation desk for an appointment. FREE.

**Thurs., Feb. 21, 10am-2pm FOR TEENS: HTC VIVE.** Have fun experiencing a completely different world with our HTC VIVE Virtual Reality System. Each participant will have a 30-minute session. Register at the circulation desk. FREE.

**Thurs., Feb. 21, 6:30pm History Lovers' Book Discussion: The Radium Girls** by Kate Moore. Mollie Maggia worked at the United States Radium Corporation in New Jersey, painting glowing numbers on dials with her radium paint, licking her paintbrush for accuracy as she'd been taught, and it killed her. Find out what happened to these "Radium Girls" as they sought justice for the lives they were losing. Books are available at the Circulation Desk. FREE.

**Fri., Feb. 22, 1:30pm FILM: Nutcracker and the Four Realms** (2018 PG) A young girl is transported into a magical world of gingerbread soldiers and an army of mice. FREE.

**Tues., Feb. 26, 11am Poetry Reading.** Bring your favorite poems to read, or read a poem we will provide, or join the audience and be entertained and inspired by fascinating poetry. Register at the Circulation Desk. FREE.

**Wed., Feb. 27, Polar Bear Day** 2pm for ages 3-5 (preschool); 4pm for grades K-1. Enjoy some polar bear stories and fill your own plush polar bear to take home. Registration is required. FREE.

**Thurs., Feb. 28, 4pm Self Defense for Teens.** Alex Vamos is will be here to teach you all the basics of self-defense! Wear comfortable clothing, including socks and sneakers. Registration is required. FREE.

**Fri., Mar. 1, 1:30pm FILM: Mudbound** (2017 R) Two men return home from World War II to work on a farm in rural Mississippi, where they struggle to deal with racism and adjusting to life after war. FREE.

**Sat., Mar. 2, 10am Literary Café.** Join Bev Wowak for this popular, informal gathering of book lovers; for coffee and talk about all things literary. Open to all. FREE.

**Sun., Mar. 3, 2pm Legendary Women of Long Island.** This fascinating program examines the lives of an elite group of glamorous women who lived during the glory days of Long Island's Gold Coast. They were the first American Super-Stars whose lives, loves, and scandals played out on the pages of international newspapers. All are welcome. Register at the Circulation Desk. FREE.

**Sun., Mar. 3, 2:30-4:30pm Art Reception.** View an exhibit by the Light Painters, and meet members of this photography group. Refreshments will be available. FREE.

**Mon., Mar. 4, 10am Sign-up begins for Youth and Parenting Library Programs.**

**Tues., Mar. 5, 6:30pm FOR FAMILIES: Family Pancakes.** Celebrate National Pancake Day with us. Parents will flip pancakes for their families, to be enjoyed plain or with added delicious toppings. Program provided by the Baking Coach. Registration is required. FREE.

## ON-GOING CLASSES:

Low Impact Dance Aerobics: Mondays from 9 to 10 a.m. \$\$

Mahjong: Mondays at 10 a.m. & Tuesdays at 11 a.m. FREE

Knitting Circle: Tuesdays from 3 to 4 p.m.

Yoga Instruction: Tuesdays at 5:30 p.m. & Saturdays at 9 a.m. \$\$

English Conversational Group: Tuesdays at 7 p.m. FREE

Chair Aerobics: Wednesdays from 9 to 10 a.m. \$\$

## IN THE LIBRARY'S ART GALLERY:

**FEBRUARY: "Seeing"** – Clay and Collage by Judith LePore Schreiber, an East Quogue resident, with a BFA in sculpture and an MA in painting. She has had two one-person museum shows in New Jersey (Paterson Museum and Botto House National Museum). She was featured on TV in New Jersey "Women in the Arts" and on CBS 60 Minutes in a classic special "Andy Rooney Goes to Work".

*In the Display Case: Judith Schreiber's Travel Diaries*

**MARCH: "Cream of the Crop – Photographer's Choice"** Members of the Light Painters Learning Center, a North Fork based photography club, present their favorite works of fine art photography. Subjects include still lifes, landscapes, seascapes, nature, wildlife and other abstracts representing their favorite works captured in field trips, personal travels and other photographic opportunities. The group of approximately 35 members meets monthly in Peconic, and new members, of all abilities are welcome. **All are welcome to an opening reception Sunday, March 3** from 2:30-4:30pm. Refreshments will be available.

*In the Display Case: Sculptures and pastels by Patrick Calkins.*



the  
League

Adopt Love!

SAMMY  
&  
BELLA



Sammy (the handsome white dog with the cute under bite) & Bella (black and white beauty) are two **Peek-A-Poos** (Pekingese and poodle mixes) who lost their home when their guardian entered the hospital. The bonded pair is spay & neutered and very healthy. They're affectionate and would love to find their forever home, together. While they are both 10 years old, they're super spunky and have lots of love to share!

JOYCE

Joyce is a sweet declawed senior kitty who is also a total cuddle muffin and wants nothing more than a person to call her own. She loves attention, affection, and gentle chin rubs. We want to see her become part of a family so much so that her adoption fee is being waived.



**FOR MORE INFO, PLEASE CALL OR EMAIL:**

**631-765-1811, ext. 1 • manager@nfawl.org**

North Fork Animal Welfare League  
**nfawl.org**

**FLOYD MEMORIAL LIBRARY**

539 First Street Greenport, NY 11944

floydmemoriallibrary.org • 631-477-0660 • floydmemoriallibrary@gmail.com

**Sundays, February 10, 17 & 24**, 1pm Free Yoga with Lynne Wentworth – Beginner and Intermediate welcome. Bring a mat.**Tuesdays, February 12 & 26**, 11am French Conversation with Nada Jamaty**Tuesdays, February 12, 19 & 26**, 6:30-7:45pm ESOL**Wednesdays, February 13, 20 & 27**, Scrabble. New Players Welcome!**Wednesdays, February 13, 20 & 27**, 6:30pm CHESS with Jim Nemeth**Thursdays, February 7, 14, 21 & 28, March 7 & 14**, 1-2:30pm CAST, Cornell Cooperative Extension ESL & Nutrition program**Thursdays, February 7, 14, 21 & 28**, 1pm Mah Jongg. New Players Welcome!**Thursdays, February 7, 14, 21 & 28**, 6pm WINTER FILM FEST2/7 **THE LEISURE SEEKER** 2017 US directed by Paolo Virzi2/14 **TROUBLE IN PARADISE** 1932 US b/w directed by Ernst Lubitsch

Valentine's Potluck after film, bring a dish to share

2/21 **45 YEARS** 2015 UK directed by Andrew Haigh2/28 **A PLACE AT THE TABLE** 2012 documentary by Jacobson & Silverbush**Saturday, February 9**, 2pm Greenport Community Association – All Welcome.**Sunday, February 10**, 2:30pm AUDUBON Program: Snowbound: Animals of Winter**Tuesday, February 12**, 1-3pm POP UP LIBRARY @ Orient Country Store**Thursday, February 14**, 10am-1pm Medicare Counseling HIICAP AARP one on one. Appointments necessary.**Saturday, February 16**, 3pm HUGH PRESTWOOD IN CONCERT. Annual Valentine's experience of mostly love songs from the Nashville Hall of Fame songwriter.**Wednesday February 20**, 3:30pm MYSTERY BOOK DISCUSSION: THE BEGGAR'S OPERA by Peggy Blair. Moderated by Janet Olinkiewicz.**Friday, February 22**, 10:30am BRUNCH POEMS – bring a couple of favorites to read and discuss.**Monday, February 25**, 1pm Floyd Memorial Library, 4 pm Peconic Landing – BOOK DISCUSSIONS: THE STONE DIARIES by Carol Shields – discussion moderated by Poppy Johnson**CHILDREN'S PROGRAMS****Mondays:** Yoga with Ms. Leith, 4:30 to 5:15pm. This program is for children ages 5-10. We have a limited number of mats, please bring a mat if you have one. Come relax and reenergize for the week ahead! Registration required.**Tuesdays:** Childcare provided for those who are attending the ESL class from 6:15 to 7:45. We will play games, read stories and have fun exploring the children's room.**Wednesdays:** Toddler time for children 12 to 36 months and their parents/caretakers. Wednesdays, February 13, 20 and 27. 10:30-11:30. No registration. Come sing, dance, play, and create with us during this fun-filled hour.**Thursdays:** Preschool Storytime for children ages 3 and up and their parents/caregivers, 10.30-11.30. No registration. This storytime will focus on reinforcing basic concepts through stories, music, games, and crafts.**Saturday February 9:** Free play Saturdays for toddlers and young children and their parents/caregivers. Drop in anytime between 10 and 12 noon and play with provided toys. No registration. Stay for the whole two hours or just a little while.**Special Programs for February****Sunday February 10.** Need a Valentine for that special someone? Come create a special one anytime between 1 and 4:30pm. All ages welcome. No registration**Saturday February 16.** Winter Tree Suncatcher craft using tear art. All ages welcome, no registration, drop in anytime between 10 am and 4:30 pm. Now that the days are getting longer, design a suncatcher to catch some rays!**Tuesday February 19.** Family movie at 1pm. Small Foot is an epic story of friendship and courage. Rated PG, snacks provided.**Wednesday February 20.** Lyrical children at 1pm. Please register. Limited to 15 participants ages 4 and up. A wide variety of activities with Djembe drums and drumming in addition to games, dancing, singing and instrument play.**Friday February 22.** A morning with Abe and George with Miss Candi - 11am, for ages 5 and up. Limited to 15 participants, please register.**Come join us as we celebrate Presidents Week** with crafts that honor two of our past Presidents. Let's build Abraham Lincoln's childhood log cabin and paint George Washington's infamous Cherry Tree. Have fun while we learn!**Monday February 25.** Flip flop Gymnastics for Floyd Memorial Library patrons ages THREE TO FIVE. The program will take place at Flip Flop Gymnastics located at 46520 Rte 48 Southold NY. Learn some basic tumbling, stretching and gymnastic skills with Ms. Jaime. Please arrive at 10:15 to sign waiver. Registration required, limited to 6 participants. \$5 Per child payable upon registration. Due to safety reasons this program is for children ages 3 to 5 only.**The children's room continues to collect hats, gloves and scarves for adults and children in conjunction with CAST.****SUFFOLK COUNTY HISTORICAL SOCIETY**

Museum – Library – Art Gallery, 300 W. Main St., Riverhead, NY 11901

631-727-2881 • www.suffolkcountyhistoricalsociety.org

**EVENTS****Saturday, February 16**, 1pm **BOOK & BOTTLE:** *African American Genealogy*, with Sandi Brewster-Walker. Learn about African American family history research and the best resources to consult. Members Free; Non-Members \$5. Includes light refreshments and admission to exhibits. RSVP Requested: 631-727-2881 x 100.**Saturday, February 23**, 11am **BOOK & BOTTLE:** *America's Early Whalers: Indian Shore Whalers on Long Island, 1650-1750*. John Strong will explore his new book on the important contributions of Native peoples to colonial America. The Indians of coastal Long Island, closely attuned to their maritime environment, became whalers integral to the origins and development of the American whaling enterprise from 1650 to 1750. Strong's research draws on exhaustive sources and addresses labor relations, the role of alcohol and debt, the patterns of cultural accommodations by Native Americans, and the emergence of corporate capitalism in colonial America. A limited number of books will be available for purchase. Members Free; Non-Members \$5. Space is limited. Reservation Required: 631-727-1881 x100.**Thursday, March 7**, 6pm **BOOK & BOTTLE:** Frank Turano, Margaret Fuller: *America's First Feminist*. Join us for our National Women's History Month event, a presentation on the American journalist and women's rights advocate Margaret Fuller, whose book *Woman in the Nineteenth Century* is considered the first major feminist work published in America. Learn about Fuller's life, work, and connection to Suffolk County's history. Members Free; Non-Members \$5. Includes wine and cheese and admission to exhibits. RSVP Requested: 631-727-2881 x100.**Saturday, March 9**, 1pm **OPENING RECEPTION:** "Oh, Sweet Spring!" exhibit. "For winter's rains and ruins are over; Blossom by blossom - the Spring begins!" There may still be rain and ruin outside, but inside the museum's Gish Gallery, spring has sprung! Come explore a decadent visual and audio cornucopia of music, paintings, pottery, textiles, clothing, and sculpture that celebrate the passing of Old Man Winter. This exhibit is sure to have you kicking off the galoshes, tossing away the umbrella, and leaving with a song in your heart and a smile on your face! Free opening reception admission and light refreshments.**CURRENT EXHIBITS**

- **The Silver Screens of Suffolk.** Celebrating the History of Film: 1900s to 1960s. This exhibit celebrates the history of film, illustrating its early connections to Suffolk County and our area's charming local theaters, while also outlining cinema history through a showcase of one of the finest private collections of movie posters, programs, heralds, and theater window cards. In our Grand Staas Gallery thru April 27.

- **The Long Island Express: Remembering the 1938 Hurricane.** An 80th-anniversary exhibit featuring historic photographs, newspaper reports, stories of personal accounts, and artifacts salvaged from the wreckage of the 1938 hurricane. Curated by Jaime Karbowiak. In our Gish Gallery thru December 2018.

- **Spotlight Series: The Paintings. Highlights from the Permanent Collection.** The Suffolk County Historical Society Museum is delighted to offer the first in a new Spotlight Series of exhibits designed to bring some of our wonderful objects out on display for all to enjoy. With over 250 paintings in our collection, this exhibit features selected oil paintings by a range of 19th- and 20th-century professional and amateur artists chosen for their beauty, quality, and community connection. In our Weathervane Gallery.

- **Spotlight Series: A Moment of Tranquili – TEA.** Teapots of the 19th Century From Our Permanent Collection. An exhibit featuring teapots of the nineteenth century from our permanent collection. The SCHS has over a hundred teapots and is proud to present a selection of the finest examples in this exhibit. In our History in the Hall display cases.

**OFF-SITE EXHIBITION**

Suffolk County Pine Barrens Pictorial Exhibit. A standing display on loan from the Suffolk County Historical Society provides an overview of the history of the Pine Barrens and the critical role this region plays in the protection of Suffolk County's precious groundwater. On display at the Suffolk County Water Authority Education Center: 260 Motor Pkwy, Hauppauge, NY. 631-292-6565 or EdCenterTours@SCWA.com.

**SCHS PHOTO OF THE WEEK SERIES!** To subscribe to our free and popular historic photo-story series, visit our website or send an email request to librarian Wendy Polhemus-Annibell: wannibell@schs-museum.org**ONGOING: Membership Drive!** Join the Suffolk County Historical Society and support local history preservation. Founded in 1886, SCHS is a non-profit organization that collects and preserves the rich history of Suffolk County. We operate a history museum, offer an expansive library and archives, and host a multitude of events, programs, and educational lectures and workshops. Our unique collection reflects more than three centuries of local history.

Visit our website or call 631-727-2881 to join.



Look for the next issue of the Peconic Bay Shopper on March 8th.  
Visit [www.academyprintingservices.com](http://www.academyprintingservices.com) to view past issues.

*Happy Valentine's Day!*



# FORTHEBENEFITOFCAST'SWINTEREMERGENCYFUND



# NATURALLY NORTH FORK



## INCREDIBLY LOW PROPERTY TAXES

**ORIENT** **\$465,000**  
 Charming, move in ready 3+ bedrooms, 1.5 bathrooms, formal dining room, bright living room, broad front porch ideal for swing, plus large outbuilding garage. Room for pool. Abuts preserved land and just around the corner from Village Lane.  
 Web# 32767 **EXCLUSIVE**



## JUST REDUCED

**MATTITUCK** **\$519,000**  
 Mint, oversized ranch on .46 acres. Living room with real brick fireplace, bay window, and built-ins. Large kitchen, formal dining room, and den. Just around the corner from Love Lane.  
 Web# 108256 **EXCLUSIVE**



**NICHOLAS J. PLANAMENTO**  
 Licensed Associate Real Estate Broker  
 631.298.0600 (o) | 631.948.0143 (c)  
 NJP@TCHamptons.com

## CHOOSING THE RIGHT BROKER MATTERS

There are many real estate agents you could choose to work with - but very few have the track record of success that Nich's generated over the last 30 years. Whether it's marketing unique properties, negotiating the best deal, or tracking down just the right house for a discerning buyer, he has proven that he's able to not only meet but exceed expectations every time. Call Nich today to assist with your North Fork real estate needs or to receive an obligation-free Market Analysis of your property.



TownAndCountryHamptons.com



EAST HAMPTON  
631.324.8080

BRIDGEHAMPTON  
631.537.3200

SOUTHAMPTON  
631.283.5800

WESTHAMPTON BEACH  
631.288.3030

MONTAUK  
631.668.0500

MATTITUCK  
631.298.0600

GREENPORT  
631.477.5990

EVERYTHING FOR BOATING FUN

# ALBERTSON

Marine, Inc.

Full Service Marina & Discount Ships Store

## Sea Chaser HFC Series "Great Ride, Great Fishing"



View Now - Stop by Our Showroom



www.albertsonmarine.com • office@albertsonmarine.com  
61205 Main Road Southold NY, 11971 • 631-765-3232  
Accessible by Water 41 04' 34" N/72 24' 16" W