

FREE



Peconic Bay SHOPPER

preserving your North Fork history.



FEBRUARY 2017



The Ice Harvesters and "Gliders" of Mattituck-Laurel



Peconic Bay SHOPPER

...preserving North Fork History

publisher/editor — Michael P. Hagerman
art department — Rita M. Hagerman | rita.academy@gmail.com
advertising sales — Kristin Ulmet 631.466.8363 | kristinzaleski@aol.com



This publication is a division of Academy Printing Services, Inc.
42 Horton Lane - POB 848, Southold NY 11971
PH 631.765.3346 FAX 631.765.3369
EMAIL rita.academy@gmail.com

The Peconic Bay Shopper is published monthly, excluding January.
Recent issues can be viewed and downloaded at www.academyprintingservices.com

On the Cover

Eleanor Wamback assists an "injured" Eddy Adams, 1950s Mattituck.
See story on page 3.



16+ YEARS OF PROFESSIONAL EXPERIENCE

Grattan's Heating and Cooling



Providing Quality Service,
Installation and Repair for all your
home heating and cooling needs.

(631) 745-5555

GrattansHVAC@gmail.com

— INSURED —

Helping hands just a call away!

20 Years of Companion Care Services to the Elderly and Disabled



AT HOME SERVICES FOR INDEPENDENT LIVING INC.



- ❖ Companions
- ❖ 24 Hour Live-ins
- ❖ Part-time / Full-time
- ❖ Days or Nights
- ❖ Shopping / Meal Prep
- ❖ Medication Reminders
- ❖ Light Housekeeping
- ❖ Transportation
- ❖ Affordable Pricing
- ❖ Free Consultations



(631) 477-3095

53840 Main Rd, Southold • M-F 9-6, Sat 10-3

AMBULETTE SERVICE

Eastern Suffolk Transportation, LLC

...offers quality door-to-door wheelchair transportation for the elderly, disabled and those with limited mobility.

**Doctor Appointments
Adult Day Care • Special Events
Dialysis Treatments...and more!**

FULLY INSURED
NYS DOT # 38629

Accepting Medicaid
631-477-5912
estllc@optonline.net



LICENSED • BONDED • FULLY INSURED
www.athomeeldercare.com

The Ice Harvesters and “Gliders” of Mattituck-Laurel

Ice skating became very popular at the end of the 19th century when cold winters froze local lakes and ponds. The ice skating print shown here was published in 1885 by L. Prang and Co. (Library of Congress)



Extremely cold winters in the 19th and early 20th century froze local bodies of water, providing the townspeople of Mattituck and Laurel with ice that could be harvested for refrigeration and a good supply of frozen surfaces that could be enjoyed for outdoor recreation. Professional ice harvesters worked on Marratooka and Laurel Lake, while many villagers harvested their own ice from local ponds. Harvested blocks of ice supplied ice boxes and kept food cold until July. On many of the same frozen bodies of water, ice skaters, or “gliders,” skated, at first, on wooden skates with a fixed blade that clamped to a shoe or boot; but, by the end of the 19th century, they were spinning on the first ice skates, with blades permanently fixed to their boots. By 1908 figure skating had become an Olympic sport.

Keeping Foodstuff Cold

Iceboxes, invented around 1861, had hollow walls that were lined with tin or zinc and packed with various insulating materials such as cork, sawdust, straw or seaweed. A large block of ice was held in a tray or compartment near the top of the box. Cold air circulated down and around storage compartments in the lower section. Some finer models had spigots for draining ice water from a catch pan or holding tank. In cheaper models a drip pan was placed under the box and had to be emptied at least daily.



Ice Harvesting on Lake Marratooka

Ice harvesting on Marratooka was once an important industry. Ice was needed for ice boxes in local businesses and private homes. The Wickhams maintained a large ice storage house on the Suffolk Avenue side of the pond, and the butcher George Fischer one on the Main Road side. A large crew of men would harvest the ice by cutting big blocks by hand on specially adapted ice saws.



“During the cold snap of last Monday Gildersleeve Bros., Charles W. Wickham, Conkling & Reeve, Geo. L. Conkling and others succeeded in filling their large ice houses with ice about six inches thick.”

~ *The Long Island Traveler*. January 20, 1888.

“Cedric H. Wickham filled both of his mammoth ice houses with crystal clear eight-inch ice last week, the handsomest he has harvested in years.”

~ *The Long Island Traveler*. February, 1917.

Big blocks of ice were cut lengthways and crossways, then they were floated into a cradle at the ice house, lifted by two-horse power and slid into tiers in the house. Ice houses were insulated with sawdust and salt hay, a Long Island grass that grows along the seashore, good for insulation because it didn’t crumble and break as other hay, nor did it cake or spoil

Greenport Art & Design — EMPORIUM —

67380 MAIN RD · GREENPORT · 631-246-9091

**DISCOUNT PICTURE FRAMING
DIGITAL PRODUCTIONS FACILITY**

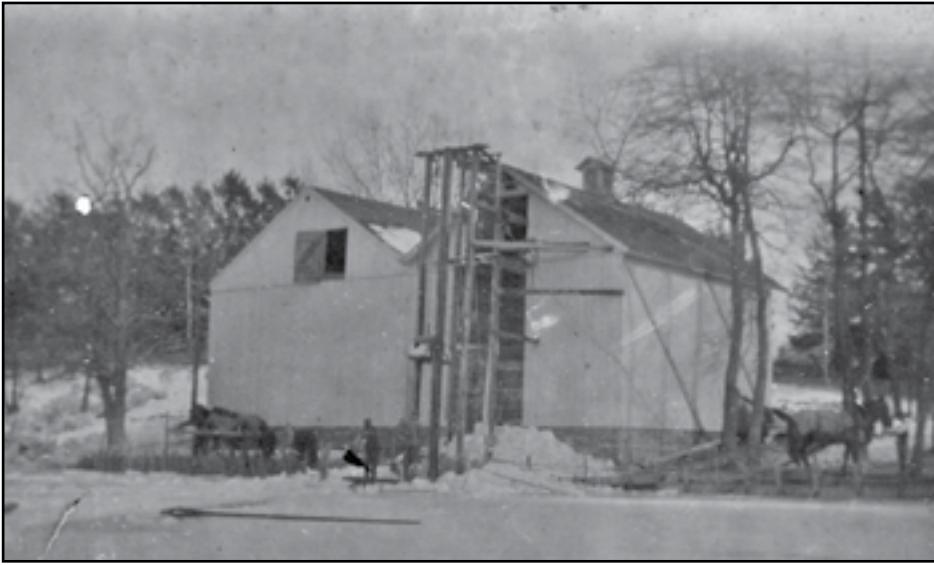
**FRAMED ART
FACTORY OUTLET**
prints, posters and paintings

WHOLESALE • RETAIL

**One of the largest Picture Framers
on Long Island**

www.greenportartanddesignemporium.com





The Charles Wickham Ice House on Marratooka Lake.
(Mattituck-Laurel Library)

if it became damp. Charles Wickham would deliver ice to homes twice a week in July and August.

George Newell, who had considerable experience in ice cutting, recalled that the men often worked in near zero temperatures, refreshed at times with sandwiches and hot coffee. The grueling work was welcome during the winter when there were not too many jobs available. According to a diary from 1897, men would work for 20 cents per hour for about nine hours a day. A loaf of bread at the time cost 12 cents.

The coldest days were rough on the horses as well as the men. There was one day when it was considered advisable to rest the horses, let them warm up in a shed with a blanket over them with some whiskey inside to warm the innards.



A situation developed when the two men assigned to the task decided the whiskey would do them more good than it would the horses. One drink from the bottle led to another and in time the bottle was emptied, with the result that Mr. Wickham had two laborers on his hands who were in no condition to cut ice for the rest of the day. The horses did benefit some. The two men remembered to put the blankets on them.

"We notice that Mr. Van Tuyl has begun disposing of the stock of ice which he has in store on the shore of Laurel Lake. He has about 600 tons of the best ice that ever was stored, which judging from the past, he will sell as low as anyone."

~ Long Island Traveler, May 25th, 1883.

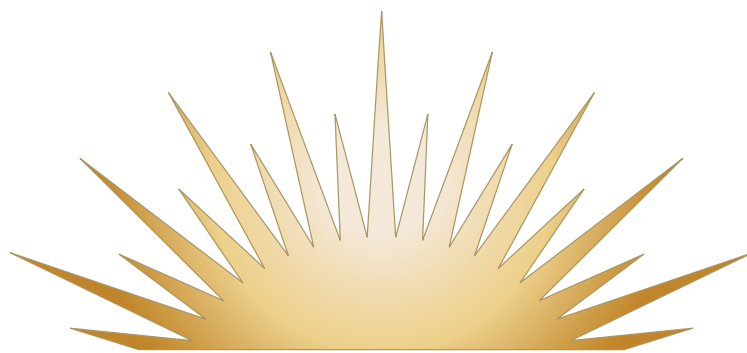
"We understand that Chas. W. Wickham of the Maratooka Farm has purchased Van Tuyl's ice house and route at Laurel Lake and will run it in conjunction with his ice house here this summer."

~ Long Island Traveler, March 11th, 1887

"Our ice house owners made good use of the late cold snap. Most of the small houses are well filled. Chas. W. Wickham began filling his house at Lake Maratooka last Monday morning and intended working at it night as well as day till it was filled. He paid 20 cents an hour and the men worked on the lake till about eleven o'clock in the night by the aid of torches, but the blinding snow storm stopped them at that hour and work was declared off till a more convenient season."

~ Long Island Traveler, February 15th, 1889

"There has been a sound of 'revelry by night' in our streets of late caused by the rattle of ice carts as they passed to and from the Railroad Station to Chas. W. Wickham's ice house on Maratooka Lake. He purchased thirteen rail car loads or about 800 tons of ice from our old friend Victor Wilson who has made quite a 'spec' in ice at Valley Field, Quebec. The ice that Mr. Wickham bought ranges in thickness from twenty to thirty inches and is quite a novel sight in our temperate zone. Anyone who purchases ice of him this summer will be sure of



SUFFOLK DESIGNER LIGHTING

EAST END DESIGN CENTER

455 COUNTY ROAD 39A · SOUTHAMPTON NY 11968

featuring



COASTAL
CABINET WORKS



Contractors | Designers | Builders | Architects | Developers



Charles Wickham's ice house on Marratooka Lake in the summer. (Mattituck-Laurel Library)

The 2017's are here!

GREAT PRE-SEASON DEALS!



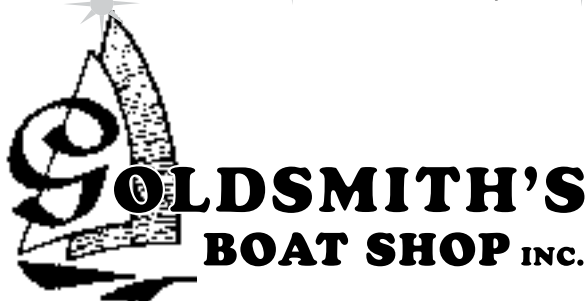
KEY WEST

Fishing Boats
from
15' to 29'



Leftover Blow Outs! Super Savings!

Celebrating...
EST. 1923
Our 94th Year!
The OLDEST continuous
Marine Dealership in the USA
serving eastern Long Island.



**STORAGE
SHRINK-WRAPPING
REPAIRS & TUNE-UPS
PARTS
ELECTRONICS
SALES & SERVICE**

— Yards at Founders Landing & Mill Creek • Southold • 765-1600 —

getting a fine article. Mr. Wilson informs us that he has stocked, housed and shipped upwards of 20,000 tons on beautiful ice at Valley Field and bids fair to make a very good thing out of it. It is always pleasant to hear of the success of 'our boys' and Mr. Wilson deserves much credit for grasping the situation and making the opportunity his, so profitably.

~ Long Island Traveler, April 18th, 1890

"Chas. Wickham has his big ice house at Maratooka nearly filled with seven inch ice, so we trust his expensive experiment of last winter in bringing it from Lake Champlain will not have to be repeated this year."

~ Long Island Traveler, January 16th, 1891

According to a 1986 interview entitled "Back Over the Years," some Mattituck residents had their own ice houses as did Clarence Richard "Chippy" Bennett's family (in the area of Bennetts Pond Lane). The family had dug out an ice pond on their property and built a round, brick ice house that was quite large and twelve feet deep. They would cut the ice in cakes and packed them into the ice house with salt meadow hay so the ice could last until July. Irma Reeve remembers her family going to a swampy area north of Sound Avenue to cut ice. Her father and her brothers would cut ice to store in an ice house they had in their cellar.

Ice was also harvested from Husing Pond by the Husing family and perhaps other local residents.

According to Edna Yaeger in the *Long Island Forum*, horses were such a vital possession in ice harvesting that provisions were made for their protection. Before harvesting began, workers had extra horses on hand and extra blankets, and long thick planks of wood. If a horse fell into the icy water, the men pushed the heavy planks under the animal, making sure the ends of the



Skaters gather on Marratooka Lake in 1917. (M-L Library)

planks rested on solid ice. A fresh horse was attached to the fallen horse, and he pulled him out of the water by dragging him up the planks. The frozen horse was quickly rubbed down and dry blankets put on him, and he was placed in a warm stable, near the engine room, where he would soon be none the worse for his "ducking."



Happy  Valentine's Day!

**BURGERS, THIN-CRUST PIZZAS,
FISH, WINGS & DAILY SPECIALS!**

Prime Rib Tuesdays!

"Burger and a Beer" Thursdays!

OPEN Mon - Fri: 4 pm - ?, Sat - Sun: Noon - ?
KITCHEN OPEN 5-10 pm, Fri & Sat until 11:30 pm

CHECK US OUT ON **facebook** "Sophie's Rest"
730 Main Bayview • Southold • 631.765.5700

SOUTHOLD FISH MARKET



SHRIMP PLATTERS!

Happy Valentine's
Day! 

NEW HOURS:

M-Th 9-6, Fr-Sat 8-7, Sun 8-5

KITCHEN OPEN!

64755 Main Road, Southold

CHECK US OUT ON **facebook** "Southold Fish"

765-3200

SENIOR 10% DISCOUNT THURSDAYS!



Ice-skating at Marratooka seems to rival Central Park in the 1930's. Here more than 50 automobiles line New Suffolk Avenue and encircle the lake as scores of onlookers watch the skaters glide over the ice in front of the former home of Charles W. Wickham. (Mattituck-Laurel Library)

Ice Skating on Marratooka Lake

“Maratooka Lake was thronged with merry skaters late Monday evening, and the ice was in splendid condition.”

~ Long Island Traveler, February 3rd,
1882

“Skating upon Lake Maratooka was fine until the snowstorm of Tuesday. The lads and lasses had splendid sport upon its glassy surface.”

~ Long Island Traveler, January 20th,
1888

When Gertrude Reeve Raynor was interviewed at age 87, she reminisced about ice skating on Marratooka Lake: “Marratooka was the lake we wanted to skate on, but we couldn’t go on that lake until Mr. Wickham said it was safe. When my father was a boy, the next door neighbor, the Brown boy, fell in. They got him out, but after that father always said, ‘Not until Mr. Wickham says so.’ And when Mr. Wickham harvested ice, he always had a rope marking off where they were cutting. We usually skated on this side of the lake, near the main road.”

The popularity of ice skating increased dramatically in the era before radio and television. At local gathering spots, though the air was chill, conversations and romances thrived. Sometimes the boys would build a fire; someone else might provide cider and doughnuts. Best of all, a gentleman could occasionally – O tender moment – offer to help a lady buckle on her skates.

Ice skating on Marratooka was still popular in the 1950's. Norman Wamback, the village historian, has several photographs of himself and his family and friends enjoying the frozen lake with other outdoor enthusiasts.



Young woman holding her dog with the Wickham Ice House in the background, 1917. (Mattituck-Laurel Library)



George Kaiser, Eleanor Wamback, Eddy Adams, Nancy Audioun, and Norman Wamback. (Courtesy of Norman Wamback)

GRATTANS GRINDING

 Pete Grattan, Jr.
Major Credit Cards

765-4940

1040 Hortons Lane Southold

SNOW BLOWERS!

Get ready for Spring!

COME IN **NOW** BEFORE THE RUSH



FOR



MOWER TUNE-UPS

ENGINE SERVICING

AND BLADE SHARPENING

*What better time
to own one!*

In stock....

50 lb. bags of

ICE MELT

...good to 20° below!

WE STILL HAVE SNOW SHOVELS AND DE-ICER!

Jonsered



ON WOLF PIT LAKE ICE: Left: Lloyd Stanley and Jimmy McCarthy Right: Ralph Armbrust, c. 1955. (Courtesy of Norman Womback)



Start saving for that one moment you **Value** most with a:

NYCB ELITE RATE 12-MONTH CD

1.21%¹ APY¹

\$500 minimum to open and to earn interest. Get this great rate when you enroll in **NYCB Elite**, link your CD to a new or existing **NYCB Elite Gold Checking** account and maintain \$100,000 or more in combined balances².

myNYCB.com • (877) 786-6560 | NewYorkCommercialBank.com • (800) 535-2269

The  *Family* of Banks®

New York Community Bank • Member FDIC and its Divisions -
Queens County Savings Bank • Roslyn Savings Bank • Richmond County Savings Bank
Roosevelt Savings Bank • Garden State Community Bank • Ohio Savings Bank • AmTrust Bank

New York Commercial Bank • Member FDIC
and its Atlantic Bank Division

¹Annual Percentage Yield (APY) above is accurate as of date of publication and is subject to change without notice. The minimum balance to open the promotional CD and to earn the stated APY is \$500. The interest rate remains fixed until maturity. A penalty may be imposed for withdrawals before maturity. Fees could reduce earnings. The Promotional CD must be opened with new money not currently on deposit with the Bank.
²To earn 1.21% APY on the 12 Month CD, enrollment in NYCB Elite Gold or Platinum is required. NYCB Elite Gold Checking account minimum to open is \$5,000. NYCB Elite Relationship Terms and Conditions apply. Not available for non-profit or business accounts. Maintain \$100,000 or more in combined balances in the NYCB Elite Gold relationship to waive monthly fee. Those not enrolled in NYCB Elite will earn 1.11% APY on the 12 Month CD.
Rates are available for accounts opened in branches located in Arizona, New York, New Jersey. Offer may be withdrawn at the discretion of the bank at any time. The bank is not responsible for typographical errors.
©2017 New York Community Bank ©2017 New York Commercial Bank



This is the Ralph W. Tuthill home facing Wolf Pit Lake in the winter of 1955. The home was originally owned by Capt. Ellsworth Tuthill, then passed on to Nathaniel Tuthill, who started the Wolf Pit Lake Farm. (Mattituck-Laurel Library)



Right: Wolf Pit Lake, c. 1910. (Mattituck-Laurel Library)

Ice Skating on Wolf Pit Pond

“ ‘And all go out a skating O!’ seemed to be the hue and cry here last week. The small ponds appear to catch all the ‘gliders’ as Maratooka Lake so far has not been in safe condition.”
~ January 13th, 1882

Judge Ralph W. Tuthill owned the farm adjacent to the Wolf Pit Lake for many years. He eventually purchased the house and the farm. He and his wife allowed anyone to ice skate on the pond in front of their house. In old age, he wanted this winter fun to continue, so he donated the pond and some property around it to the Mattituck Park District in 1968.

The Frozen Wonderland of Mattituck Creek

At the turn of the century, before Mattituck Creek had been dredged to greater depths for boaters, this tidal creek ebbed and flowed with shallow brackish water that never ran higher than seven feet, making its frozen

surface ideal for skating and sleighing. On a moonlit winter night, a party could take a horse-drawn sled over the crackling cold creek up to the Old Mill:

“The sleighing on Mattituck Creek is fine, as its entire surface is safe for teams, and the ride from the foot of Love Lane to the picturesque Old Mill is a very pleasant trip.”
~ The Long Island Traveler, February 3, 1888

Donald Gildersleeve once told the story of the “Eight-Minute Bell”: “Some school teacher with a brain like a computer had figured out to the second just how long it would take a boy or a girl on Maratooka Lake to take off his or her skates and walk back to the schoolhouse which was then on the site of our present Library building. It was eight minutes. So at eight minutes before one o’clock each school day, the school bell would toll the message. At times there would be skating on Mattituck Creek on the Cove. The eight minute bell applied here too. One noon recess hour we were on the Cove

www.FlandersHVAC.com

Think *Flanders* First!

“I’m So Stupid!!!”

Don’t let this be YOU in Six Months.

Here’s the Deal: Right now at Flanders we’re offering **18 Months No Payments, No Interest, No Money Down on ANY Installed Heating or Air Conditioning System.**

Which Means this Summer, when you’re miserable because it’s really Hot and Humid, you could instead be enjoying a **Spectacular New Air Conditioning System**, already installed, *that you haven’t yet spent a dime on!*

**AVOID FUTURE SELF LOATHING:
CALL FLANDERS TODAY!**



TL;DR?

- 18 Months
- No Payments
- No Interest
- ANY Installed Heating or A/C System
- Ends Soon, Call Today!

Flanders Since 1954
HEATING & AIR CONDITIONING
Must Include Installation. Must Qualify for Financing.

100% Certified Technicians

24/7 Emergency Service

Serving ALL of Eastern Suffolk

Heating, Cooling and Comfort Since 1954

Does Not Apply To Prior or Other Offers. Some restrictions may apply. Cannot Combine w/Other Offers. See Dealer for Complete details. Exp. 02/28/17

(631) 727-2760

24/7 EMERGENCY SERVICE



Reeve's Pond or King's Pond (pictured above)

when there was a rise in the tide and we were surrounded by water. There was a plank from the ice to the shore, but when the bell rang, the "big fellows" pelted with snowballs anyone who tried to use the plank. Well, nobody was ever afraid of a few snowballs, except possibly when they were "water soakers," but to carry out the idea, those who were yet on the ice, pretended to be, so it was a good fifteen minutes after one when Principal Sweeny's and Miss Bailey's pupils clumped noisily upstairs to be called down severely by the principal. Some boy ventured an explanation that we had to find a plank before we could leave the ice. Which was true, but the fact that the plank had been there all the time, seemed to have made a white lie a little dark."

"Skating upon the Creek has been fine, last week both day and night its broad expanse was dotted with merry groups of skaters, but the warm spell of last Friday spoiled all the young peoples' fun."

~ Long Island Traveler, February 22nd, 1889

"The Cove Creek has been covered with ice thick enough for skating the past week and its glassy surface was dotted with a merry crowd all the afternoons and evenings while it lasted." ~ Long Island Traveler, January 16th, 1891

The land off of Old Jule Lane and New Suffolk Avenue had been in the Reeve family since 1658, and the Reeves may have built their pond to catch fresh water from James Creek and make it available for their farm animals. Their barn was close by. The pond was also called Isaiah's Pond and Reeve Rink:

"Washington's Birthday celebrated on Monday last week was heartily enjoyed by the school children and the "big children" too who flocked to the Cove creek, Lake Maratooka and "Reeve Rink' in large numbers all bent on having a good time."

~ The Long Island Traveler, February 17, 1885

In 1923, Mr. Maurice H. King and his wife Christine from Pine Neck, Southold, purchased the land and locals began to call the body of water King's Pond.

King's Pond always seemed the first to freeze. Local resident, Bette Kron, skated on the pond when she was a young girl after Norman Addy, who lived near the pond, said it was safe for skaters. At one point, Norman installed a light pole on the pond for night skating. When the kids were finished for the evening, they rang Norman's bell and he went down to the basement where he put a convenient switch to put the light out.

SERVING THE EAST END SINCE 1927

TIME TO PICK UP YOUR PICKUP!

**2017 RAM 1500 CREW CAB
SPORT 4X4 HEMI**
Stk.#17038



TRUCK MONTH

SAVE OVER!
\$9,000!

MSRP: \$49,775
Mullen Discount: -\$3,940
Rebates: -\$5,250
YOU PAY ONLY: \$40,585

PLUS
Qualifying Returning Lessees Can Get An
ADDITIONAL \$2,500 BONUS CASH!

**2016 RAM 1500 QUAD CAB
4X4 HEMI EXPRESS**
SLT MODEL SHOWN
Stk.#17130



90 YEARS

SAVE OVER!
\$7,000!

MSRP: \$41,710
Mullen Discount: -\$2,052
Rebates: -\$5,250
YOU PAY ONLY: \$34,408

SAVE BIG ON ALL IN-STOCK 2016 MODEL YEAR CARS & TRUCKS!

MULLEN MOTORS

East Main Street, SOUTHOLD • 765-3564
www.mullendealsoftheweek.com • www.mullenmotors.com







*Restrictions Apply: Must Finance Through Chrysler Capital. See Dealer For ALL Requirements and Details, Tax, Tags & DMV Extra. Chrysler, Jeep, Dodge, SRT and Ram are registered trademarks of Chrysler Corporation, LLC. Not responsible for Unintended Errors of Omissions. Expires 02/28/17.

Pre-Screened Vendors

NorthForkWeddings.com
SouthForkWeddings.com



NORTH FORK
weddings
SOUTH FORK

Screened & Approved

The Local Expert for
Weddings, Parties Getaways & Vacations
on the North Fork & the Hamptons

631-606-0198



The Cove west of the Westphalia Avenue Bridge. This popular ice-skating area no longer exists, having been filled in with dredged sediment from the creek. (M-L Library)

2017 CARE CAMPAIGN

MAKE AN IMPACT

ELIH Breast Health Campaign

Earlier detection for breast cancer is now possible with state-of-the-art mammography.

In response to patient concerns about breast health, ELIH's newest initiative is a 3D/breast tomosynthesis mammography system.

Help us build a Breast Health Center of Excellence for the residents of the North Fork and Shelter Island.

Facts About 3D/Breast Tomosynthesis Mammography

- State of the art cancer detection
- Significant increase in invasive cancer detection
- Reduces callbacks for additional imaging
- Better for both dense and non-dense breasts
- Reduces number of false positives
- Fewer follow-up tests and biopsies
- Minimal radiation to patient

Please consider helping Eastern Long Island Hospital maintain its high standard of quality by making a contribution today.

You can make a difference with your charitable gift.

For more information, call Linda Sweeney, **631.477.5164**



Focused on the Future

With changing technologies and new standards of care, ELIH is focused on setting even greater goals for the benefit of the community. Those who count on us year after year for routine medical care, urgent or emergency care know the importance of quality care close to home.

Operation Renew

Soon we will break ground for the first phase of Operation Renew, a multi-phased initiative to rebuild existing operating room suites for today's highly sophisticated surgeries.

With sub-specialists on board in the fields of spine surgery, ELIH is expanding to accommodate even more surgical specialties and develop programs to meet the growing needs of our patients.

Rather than sending patients west for care, ELIH is dedicated to taking care to the next level for our neighbors and friends on the beautiful East End of Long Island.

Keeping healthcare local

"During the war years, I was about twelve years old. It was a warm day – a nice sunny day – the end of March. I rode my bike to King's Pond to go ice skating. The ice was thick but a little soft. I was skating a little bit then suddenly hit a soft spot and fell in up to my waist. I pulled myself up and avoided falling deeper by holding onto the surrounding ice. I never told my mother - or anybody. We also went skating at night on King's Pond.

We would also skate at Lake Marratooka at night where they would burn a fire. Once we all got a rash on our faces from the smoke of the poison oak that was used as part of the fuel for the fire." ~ Claire Fisher

When you pass the creek, lakes, and ponds of Mattituck-Laurel this winter season, try to imagine the ice harvesters out on the ice, exhaling frosty clouds of breath into the cold air, as they push and pull long two-handled ice saws to carve the blocks of ice. Imagine the revelry as "gliders" lean and race over a frozen expanse, their cheeks red, their scarfs blowing wide; you could hear the shouts of friends, the skurr of blades as they scroll the ice, the bright laughter at awkward postures, the sudden slip and spill. And then recall the sheer joy of gliding gracefully, the wind behind you, defying gravity – a free soul in pure motion!

By Jeffrey Walden, Director, and Jerry Matovcik, Reference Librarian, of Mattituck-Laurel Library. (Thank you to Danny McCarthy from the Southold Historical Society for help with research.)



Protect your world

Auto • Home • Life • Retirement



Call me today to discuss your options.

Some people think Allstate only protects your car. Truth is, Allstate can also protect your home or apartment, your boat, motorcycle - even your retirement and your life. And the more of your world you put in Good Hands[®], the more you can save.



Chris Manfredi

631-765-4666

44655 County Rd. 48

Southold

cmanfredi@allstate.com



Allstate[®]

You're in good hands.

Auto Home Life Retirement

Se habla español.

Just east of Hortons Lane.

Insurance subject to terms, qualifications and availability. Allstate Property and Casualty Insurance Co., Allstate Fire and Casualty Insurance Co., Allstate Indemnity Co., Allstate Vehicle and Property Insurance Co., Northbrook, IL. Life insurance offered through Allstate Life Ins. Co. & Allstate Assurance Co. Northbrook, IL; Lincoln Benefit Life Co., Lincoln, NE; and American Heritage Life Insurance Co., Jacksonville, FL. In New York, life insurance offered through Allstate Life Insurance Co. of New York, Hauppauge, NY. Securities offered by Personal Financial Representatives through Allstate Financial Services, LLC (LSA Securities in LA and PA). Registered Broker-Dealer. Member FINRA, SIPC. Main Office: 2920 South 84th Street, Lincoln, NE 68506. (877) 525-5727. © 2010 Allstate Insurance Co.

Calendar of Events

LIST YOUR EVENTS!

Our monthly listings are free to all non-profit organizations and fundraising events.

Email: rita.academy@gmail.com

VALENTINE EXTRAVAGANZA SATURDAY FEBRUARY 11

The Old Town Arts & Crafts Guild in Cutchogue is hosting a VALENTINE EXTRAVAGANZA of fine art, antiques, and crafts fair from 9am to 4pm at the Peconic Recreation Center, 970 Peconic Lane, in Peconic. There is something for everyone! Antiques, fine art, photography, pottery, jewelry, crafts and more. Free admission, food available for purchase. For more information: www.oldtownartsguild.org or email oldtownguild@aol.com

SAFE BOATING COURSES

www.WeBoatSafe.org • Squadron: Peconic Bay - America's Boating Course
Contact: Vince Mauceri • 631-725-3679 • vamauceri@gmail.com

Seminars

Knots, Bends, Hitches Start Date: FEB 11th, 1pm Cost: \$15

Location: West Marine, 1089 Old Country Road, Riverhead, NY 11901

Sail Trim Start Date: MAR 11th, 1pm Cost: \$15

Location: West Marine, 1089 Old Country Road, Riverhead, NY 11901

Marine Radar Start Date: APR 8th, 1pm Cost: \$15

Location: West Marine, 1089 Old Country Road, Riverhead, NY 11901

Partner in Command Start Date: MAY 15th, 1pm Cost: \$15

Location: West Marine, 1089 Old Country Road, Riverhead, NY 11901

Boat Handling Under Power Start Date: MAY 20, 9am Cost: \$20

Location: Strong's Marina, Camp Mineola Road, Mattituck, NY 11952

Using VHF/DSC Marine Radio Start Date: JUNE 10th, 1pm Cost: \$15

Location: West Marine, 1089 Old Country Road, Riverhead, NY 11901

America's Boating Courses

Start Date: APR 5th, 7pm Cost: \$50

Location: Riverhead Moose Lodge (basement), 51 Madison Ave.. Riverhead, NY 11901

Start Date: MAY 3rd, 7pm Cost: \$50

Location: Riverhead Moose Lodge, 51 Madison Avenue. Riverhead, NY 11901

"A STANDARD ROMANCE" - FEBRUARY 11 & 12

The NFCT will present 2 concert performances of "A Standard Romance" on February 11th at 8pm and on Sunday February 12th at 2:30pm. The show will feature NFCT performer Laura Meade who was most recently seen in NFCT's "First Date" this fall, but who has played leading roles all over Long Island. She recently moved to Cutchogue and is a singer, songwriter, actress, and the lead singer in a band. Accompanied by her uncle Terry Meade, Laura will sing a collection of her favorite music: the American Standard Playbook. Tickets \$15 and can be purchased at www.nfct.com or by calling 631-298-NFCT. Donors to the NFCT are invited free of charge to thank them for their support of the NFCT. Donors should call Mary Motto Kalich at 917-334-6639 to set up their free tickets!

CINEMA SERIES

The popular annual winter favorite, the Cinema Series, is back, Saturdays, 7:30pm, hosted by North Fork Reform Synagogue in the social room at Cutchogue Presbyterian Church on Rt. 25. Handicap accessible. Light refreshments served. Everyone welcome. Suggested \$5 donation. Info 631 722-5712, www.northforkreformsynagogue.org

February 25 **Walk on Water**, a 2005 release, running time 103 minutes

This enthralling award-winning film by internationally-acclaimed director Eytan Fox explores the motives, strengths, and, ultimately, the humanity of an Israeli assassin sent to rectify a wrong committed five decades earlier. Eyal is a top assassin in the Israeli secret service. He has killed terrorists before, but this time he is sent to eliminate an aging former Nazi war criminal. During his mission, Eyal meets his target's granddaughter and grandson, who inadvertently help him uncover his own troubled history and face his demons, while they discover the ugly truth their family has hidden from them for decades. What began as a straightforward mission, has suddenly escalated in intensity and complexity thrusting three very different people into a thrilling triangle of murder, friendship and fate.

March 25 **The Assistant**, a 1997 release, running time 116 minutes.

Based on the book by Bernard Malamud. Set in a working-class neighborhood of Brooklyn, New York, it explores the situation of first- and second-generation Americans in the early 1950s as experienced by three main characters and the relationships between them: an aging Jewish refugee from Tsarist Russia who owns and operates a failing small grocery store, a young Italian American drifter trying to overcome a bad start in life by becoming the grocer's assistant and the grocer's daughter, who becomes romantically involved with her father's assistant despite parental objections and misgivings of her own.

NORTH FORK COMMUNITY THEATRE 2017 CALENDAR

Mattituck | 631.298.4500 | www.nfct.com

Female of the Species (March 17 - April 2) This comedy will keep you laughing from the surprise beginning to the raucous ending. It's about the feminist revolution and those women who were affected by it, their daughters who had to bear the brunt of it, and their men who were confused by it. That's right, it's a show for everyone.

Cabaret (May 18 - June 4) The hit musical Cabaret takes us back to Berlin in 1930 as two couples attempt to find happiness while the looming threat of the Third Reich swirls around them. Presiding over it all is the menacing Emcee, whose promise that "Life is a Cabaret" may come with dangerous strings attached.

Thoroughly Modern Millie - Youth on Stage (July 20 - August 6) The story of a small-town girl, Millie Dillmount, who comes to New York City to marry for money instead of love - a thoroughly modern aim in 1922, when women were just entering the workforce. Millie soon begins to take delight in the flapper lifestyle, but problems arise when she checks into a hotel owned by the leader of a white slavery ring in China. With hit songs like "What do I Need With Love," "Speed Test" and "Gimme, Gimme" this light hearted musical is sure to delight audiences of all ages.



Polywoda

BEVERAGE

EST. 1961

BEER • SODA • KEGS • IMPORTS



100s of BEERS from around the world!
VISIT OUR GROWLER STATION
featuring **LONG ISLAND LOCAL BREWS ON TAP.**

Visit: www.polywodabeverage.com
...and check out our list of beers!


Like us on:  **facebook**
Polywoda Beverage

765-5011 55560 MAIN RD • SOUTHOLD 



**LOOK FOR OUR
UPCOMING SEASONAL BEERS!
Happy Presidents Day!**







February is American Heart Month.

Do you know that cardiovascular disease is the leading cause of death in the United States?

Give your heart some love.



**FITNESS
ADVANTAGE**

www.fitnessadvantagenf.com 

631.765.4015
ROUTE 48 • SOUTHOLD

SOUTHOLD HISTORICAL SOCIETY

631.765.5500, 54325 Main Road, Southold • www.southoldhistoricalsociety.org
Saturday, February 11, 2pm, Lecture Series "The History of the Long Island Railroad" at the Community Center at Peconic Landing, 1500 Brecknock Rd. Greenport. Simulcast to the Southold Free Library. Admission is free.

Saturday and Sunday, Feb. 25 & 26 (1-4pm) Do you remember your first model train set and how much fun you had watching the trains chugging through the model villages? Join us for some family fun on a winter afternoon with the Railroad Museum of Long Island model train layout at the Reichert Family Center, Main Road, Southold. Free admission.

Founding Families Weekend! Activities will engage everyone in exploring family roots in the community, and a chance to work on genealogical research. Get together with family members from near and far to share memories and swap stories. Activities will include:
 • Special tours of the Museum Complex • Access to Ancestry.com at the Southold Free Library • Talks by authors on their books about Southold's history • Children's activities • Collection of oral history • Walking tours of Southold and its cemeteries • Lectures on Genealogy and the History of the North Fork • A tent with tables for individual family members can meet • Demonstrations of skills: weaving, blacksmithing, printing
 Dan McCarthy, the Southold Historical Society's research assistant, is ready to help you get started on your genealogical searches. Email him a maximum of two specific questions you might have about your family's connection to Southold. Narrow your requests for information to the Southold "branch" of your family tree. Dan will be working on Founding Families Weekend requests through May 1. His email is southoldresearch@gmail.com.

RIVERHEAD FREE LIBRARY

Most programs are free and require registration. For more information, please call 631.727.3228 or go online at www.riverheadlibrary.org

ADULTS:

Now through February 28: On view in the Overton Gallery: **From Two Sets of Eyes**

Fridays through April 7: Citizenship Prep Classes, 6:30 – 8 pm

Saturdays, February 4, 11, 18: Beginning Sign Language, 10 – 11:30 am

Sunday, February 5: Sunday Matinee 2 – 4 pm **The Secret Life of Pets** – PG

Tuesday, February 7: Self-Directed Care in Mental Health, 10 am – 1 pm

Tuesday, February 7: Origami: The Japanese Art of Paper Folding, 6:30 – 8 pm

Tuesdays, February 7, 14, 28: ESL Classes, 6:30 - 8 pm

Wednesday, February 8: The Writers' Resource Group, 7 – 8 pm

Thursday, February 9: Start Your Stamp Collection, 7 pm

Thursday, February 9: Job Program for Seniors w/the *Urban League of Westchester*, 1:30 pm

Friday, February 10: Brain Teasers That Your Mind Will Love, 1:30 pm

Sunday, February 12: Free Concert: Piano Plus, 32nd Season, featuring Amos Fayette, Concert Violinist, 2 pm
 Snow Date: Sunday, February 19 at 2 pm

Wednesday, February 15: Wellness Wednesday: Know your numbers for heart health, 6-7 pm

Thursday, February 16: Free or Low-Cost Health Insurance, 2-5 pm

Friday, February 17: Fireside Chat, 3 – 4 pm

Sat., Feb. 18: Author Talk: Favorite Flavors of Ireland by Margaret M. Johnson, 11am-12:30pm

Saturday, February 18: A Homage to OPERA, 3 pm

Wednesday, February 22: Free Blood Pressure Screening at the Library, noon – 2pm

Thurs., Feb. 23: Something To Talk About: Supporting Your LGBT-Identified Child, 6-7:30pm

Thursday, February 23: Coloring for Adults & Families, 3 – 5 pm

Friday, February 24: Riverhead Foundation for Marine Research Helps Rescue Marine Mammals and Sea Turtles, 1:30 pm

Sat., Feb. 25: Book Discussion: Yes, Chef: A Memoir by Marcus Samuelsson, 11am-noon

Saturday, February 25: Free Concert: Friendship Baptist Church Gospel Choir, 2-3:30 pm

Sunday, February 26: Free Concert: Curtis Haywood's Smooth 'N Saxy Experience, 2-3:15pm

Thursday, February 28: Health Lecture at the Library, 11 am

CHILDREN & TEENS:

Wednesdays, February 8, 15, 22: Romp & Rhyme, 11-11:30am, Ages 2-4 years w/caregiver

Wednesdays, February 8, 15, 22: Tumblebooks: Read, Watch, Discover!, 4:30-5pm, Grades K-2

Thursdays, February 9, 16, 23: Play Place, 10-11am, Caregivers w/children ages birth-36mos

Fridays, February 10, 17, 24: Bilingual Rhyme Time! 10-10:30am, birth-36mos w/caregiver

Fridays, February 10, 17, 24: CrafterNoons, 4-6pm, Grades K – 6

Monday, February 6: Penguins, Penguins, Penguins, 4:30-5:15pm, Grades K-4

Monday, February 6: Meet the Breeds: Meet a Cocker Spaniel, 7-8pm, Grades 3-8

Tuesdays, February 7, 14, 21, 28: Circle of Stories, 11- 1:30am, Ages 3-5 with caregiver

Tuesday, February 7: ROBLOX Night, 5-6:30pm, Grades 7-12

Tuesdays, February 7, 14, 21, 28: Lego Club, 6-7pm, Grades K – 6

Friday, February 10: Friday Night Fun: Art Studio, 7- 8pm, Grades 5-8

Friday, February 10: Teen Loft Activity Night, 9-10:30pm, Grades 7-12

Saturday, February 11: Rhythm of the Drum, 2-2:30pm, Grades K - 6

Saturdays, February 11, 25: Everything is Strawsome!, 3-3:45pm, Grades 3-6

Monday, February 13: My First Art Class, anytime between 10-11am, birth to 2½ w/caregiver

Tuesday, February 14: DIY Valentine's Day Cards (Drop-in Craft), 3:30-4:30pm, Gr 7-12

Friday, February 17: Teen Movie Night, 5-8pm, Grades 7-12: *Magnificent Seven*, PG-13

Saturday, February 18: Pokémon Club, 2-4pm, Grades 3-6

Sunday, February 19: Little LEGOS Club, 2-3pm, Ages: 3-5 with caregiver

Monday, February 20: Art Smarts, anytime between 10-11am, Ages: 2½ to 5yrs w/caregiver

Monday, February 20: Family Movie: *Zootopia* (PG), 1-3 pm, all welcome.

Monday, February 20: Snowman's Story, 4:30-5:15pm, Grades K-4

Wednesday, February 22: Sharpie Tie Dye T-Shirt, 2-2:45pm, Grades 3 to 6

Thursday, February 23: Plead the Fifth, 4-5 pm, Grades 9-12

Friday, February 24: Teen Game Night, 6-8pm, Grades 7-12

Friday, February 24: ROBLOX Tournament, 7-7:45pm, Grades 2-4

Sunday, February 26: African Folktales, 2-2:30pm, Grades K – 6

**AUTOMOTIVE SWAP MEET, CAR CORRAL & FLEA MARKET
SUNDAY FEBRUARY 26**

The Peconic Bay Region of Antique Automobile Club of America's 18th indoor heated Automotive Swap Meet, Car Corral & Flea Market will take place from 8am to 3pm at the Southold Town Recreation Center, 970 Peconic Lane, Peconic, 11958. Tables \$30, Car Corral \$20, Spectators \$3. For more information: contact Bob Barauskas, Meet Chairman: Tel. 631-495-8619, bob25stude@aol.com www.pbraaca.com.

EASTERN LONG ISLAND HOSPITAL

www.ELIH.org • 201 Manor Place, Greenport • 477-5164

Fundraising Events

Now through May – ELIH Auxiliary Car Raffle, co-sponsored by Mullen Motors, \$50 per ticket. Win a brand new Jeep Renegade or walk away with \$15,000 cash. Drawing: May 12, 2017, 12 noon. For more information, call 631.477.5463.

June 3 – 6th Annual North Fork Waiter Race hosted by The Market. Waiters and spectators welcome. Entrants will balance a beverage-filled stemmed wine glass on a serving tray and race to the finish line without spilling. Race begins 10am on Main St. at the Opportunity Shop. Entry fee: \$50. Prizes for 1st, 2nd and 3rd place. For more information or to sponsor a waiter, call 631.477.5164.

June 14 – ELIH 25th Anniversary Golf Classic honoring Patricia and Donald Brennan. Title sponsor: Bridgehampton National Bank. Tournament Style Event at Gardiner's Bay Country Club, Shelter Island. For info/sponsorship, call 631.477.5164.

August 12 – ELIH Summer Gala, "Setting Sail" for the benefit of the Emergency Department. Outdoor tented event overlooks Peconic Bay in Cutchogue. Hosted by Mattituck Environmental. Join us for a fabulous evening featuring dinner and dancing, 5pm to 9pm, \$250pp. Exclusive VIP Bayfront Pre-Party with special performance by the Perlman Group (limited to 100 tickets), \$350pp. For info/sponsorship, call 631.477.5164.

Community Outreach

Ongoing Caregiver Support Group – A support group for caregivers of the chronically ill or elderly. 3rd Tuesday each month, 1:30pm – 2:30pm sponsored by Southold Town Senior Services, 750 Pacific St, Mattituck. For more info: 631.298.4460.

Through March 29 – Wednesday Winter Walks with Melissa Andruski. Bundle up and take a brisk walk around the hamlet, 10am, Southold Free Library. Warm up with hot beverages served in the Whitaker Room. Info 631-765-2077 or visit southoldlibrary.org.

A to Z Auto Radiator & Air Conditioning

Air Conditioning

AUTO • TRUCK • RV & FARM • INDUSTRIAL

Auto Radiators

FOREIGN & DOMESTIC • TRUCK • RV • FARM • ANTIQUE AUTOS

RADIATORS & HEATERS REPAIRED & RECORDED
 CUSTOM WORK • ALUMINUM WELDING
 A/C HOSES MADE TO ORDER
 MARINE HEAT EXCHANGERS CLEANED & REPAIRED

Bob Andruszkiewicz
 PROPRIETOR

Licensed & Insured • 43 Years Experience



1040A HORTONS LANE, SOUTHOLD • M-F 8-5, SAT 8-12

PH: 631-765-6849 • FAX: 631-765-6847 • Email: HvyResQ1@aol.com

CUTCHOGUE-NEW SUFFOLK LIBRARY

27550 Main Rd, Cutchogue • (631) 734-6360 • www.cutchoguelibrary.org
February - ART EXHIBIT – Featured Artist, Cathy Campbell, Large Watercolors.

ADULTS

Tuesday Evenings 6:30-7:30pm **LEARN OR IMPROVE YOUR ENGLISH.**

Wednesday, February 8, 6:30pm **ESTATE PLANNING 101.** Erik J. McKenna, Esq. will discuss Wills, Power of Attorney, Health Care Proxy, etc. Registration requested.

Saturday, February 11, 2-3:30pm **MANHATTAN CLAM CHOWDER & SHEPHERD'S PIE,** Cooking Demonstration with Chef Craig Geraghty. Material Fee: \$5. Register.

Thursday, February 16, 10am **BOOK DISCUSSION,** "A Short History of Nearly Everything" by Bill Bryson. Moderator, Seth Bank. No registration.

Sunday, February 26, 2pm **HIDDEN CITY ORCHESTRA** at Southold Library. A performance art group surrounded by an improvising orchestra. Sponsored by Cutchogue New Suffolk and Southold Libraries. Registration requested 631-734-6360.

TWEENS, Grades 5-8

Thursday, February 9, 6-7pm **VALENTINE CANDY WREATH.** Register.

Tuesday, February 21, 1-2pm **STRING ART.** Register 631-734-6360.

Thursday, February 23, 1-2pm **CANDY NECKLACES.** Register 631-734-6360.

Friday, February 24, 1-2pm **DIY ACCESSORY HOLDER.** Register 631-734-6360.

TEENS, Grades 9-12

Saturday, February 11, 1-2pm **TUG TOYS** for Shelter Pups. Register and receive community service 631-734-6360. Please bring form with you.

Friday, February 17, 4:30-6:30pm **FOOD CLUB MEETS MOVIE NIGHT.** Please sign up for food in advance 631-734-6360.

Wednesday, February 22, 3-4pm **BRAINFUSE HOMEWORK HELP TUTORIAL.** Receive community service, two hours if you bring a friend.

CHILDREN

Saturdays through February 25, 10-4pm **BOOK BUDDIES** for grades K-5. Practice reading skills with local teens. Must be signed up prior week 631-734-6360.

Tuesdays, February 7, 14, 21, 28, 9:30-10:30am **TOTS, TOYS & TALES.** Children up to 36 months. Registration requested 631-734-6360.

Wednesday, February 8, 4-7pm. **MAKER SPACE CRAFTS,** Valentine Beaded Ornament, for families. No registration.

Friday, February 10, 4:30-5:15pm. **STORYTIME FOR FABULOUS 4's & 5's.** "Clay Play" for ages 4-5.

Wednesday, February 15, 10-10:30am **STORYTIME FOR 2's & 3's.** "Here comes the Valentine Cat" for ages 2 & 3. Register 631-734-6360.

Thursday, February 16, 4:30-5:30pm **BOOK CHAT & CHEW,** "The Wild Robot" by Peter Brown for grades 3-5. Register 631-734-6360.

Tuesday, February 21, 4:15-5:00pm **6's, 7's & 8's ARE GREAT STORYTIME,** "Cutie Pie" for ages 6-8. Register 631-734-6360.

February 21-March 3: **OROBOT 2 KIT** – Toy Robots Please enjoy experimenting with these fun science kits. No registration.

Wednesday, February 22, 1-2pm **CARTOONING MADE EASY** with Ed Klein for grades 4-6. Register 631-734-6360.

Thursday, February 23, 1-2pm **NATIONAL BANANA BREAD DAY** for grades 2-5. Register 631-734-6360.

Thursday, February 23, 4-5pm **LEGO-MANIA** for grades K-2. Registration required.

Friday, February 24, 4pm **"The Secret Life of Pets" FAMILY FLICK.** Children ages 8 and under must be accompanied by an adult. No registration.

Saturday, February 25, 1-2pm **WHOPPER CAKE STORYTIME** grades 2-5. Register.

Monday, February 27, 6-7pm **PJ STORYTIME,** "Cops de Nieve" for ages 3-8. Register.

SUFFOLK COUNTY HISTORICAL SOCIETY

Museum – Library – Art Gallery, 300 W. Main St., Riverhead, NY 11901
631-727-2881 • www.suffolkcountyhistoricalsociety.org

Saturday, February 11, 1pm – **BOOK & BOTTLE:** Preserving the Legacy of Pyrrhus Concer with Allison McGovern and Georgette Grier-Key. Members Free; Non-Members \$5. Includes light refreshments + admission to current exhibits. RSVP 631-727-2881 x100.

Thursday, February 16, 6pm – African American **GENEALOGY WORKSHOP** with Julius & Joysetta Pearce. For beginners and advanced genealogists interested in researching African American family histories, this workshop will cover sources of information, interpretation of research data, incorporating new data and drawing conclusions, planning "next steps," and organizing records. This illustrated presentation will include live demonstrations of some of the available online research databases. Members \$15; Non-Members \$20. Includes handouts and light refreshments. Registration Required: 631-727-2881 x100.

Thursday, March 2, 6pm – **CLOSING RECEPTION:** Fullerton's Long Island: "The Lure of the Land," featuring a curator's talk with Neil Scholl and Peter Dicke from the photographer's perspective. Last chance to view this magnificent display of photographs of turn-of-the-century Long Island from our legendary Hal B. Fullerton Collection. Free admission + wine and cheese.

Saturday, March 18, 1pm – **BOOK & BOTTLE:** Long Island & the Woman Suffrage Movement with Antonia Petrash. Members Free; Non-Members \$5. Includes book sale & signing, light refreshments, and admission to current exhibits. RSVP Requested: 631-727-2881 x100.

Saturday, March 25, 1pm – **BOOK & BOTTLE:** Ferry Tales II: When Hellenic Freezes Over with George Giannaris. Hellenic owner and author George Giannaris will sign copies of his new book and share the local history of his family's landmark East Marion restaurant, along with coveted recipes, comical short stories, and his philosophical insights. Members Free; Non-Members \$5. Includes book sale & signing, light refreshments, and admission to current exhibits. RSVP Requested: 631-727-2881 x100.

Exhibit: Mapping Suffolk County: A Complementary Ten Towns Exhibit. Featuring an assortment of historic maps of Suffolk County, from the 1700s to the 1900s, in our magnificent Gish Gallery. Exhibit will run through 2016.

OFF-SITE EXHIBITION: Suffolk County Pine Barrens Pictorial Exhibit. A standing display on loan from the Suffolk County Historical Society provides an overview of the history of the Pine Barrens and the critical role this region plays in the protection of Suffolk County's precious groundwater. On display at the Suffolk County Water Authority Education Center: 260 Motor Pkwy, Hauppauge.

SCHS Photo of the Week Series! To subscribe to our free and popular historic photo-story series, visit our website or send an email request to librarian Wendy Polhemus-Annibell: wannibell@schs-museum.org

ONGOING: Membership Drive! Celebrating 130 years! Join the Suffolk County Historical Society and support local history preservation. Founded in 1886, SCHS is a non-profit organization that collects and preserves the rich history of Suffolk County. We operate a history museum, offer an expansive library and archives, and host a multitude of events, programs, and educational lectures and workshops. Our unique collection reflects more than three centuries of local history! Visit our website or call 631-727-2881.

From the Civil War to civil rights, revolutions to restorations, spies to Suffragettes, boatbuilders to bootleggers, and whalers to wineries, Long Island's history comes alive at the SCHS.

**HOEY'S
CUSTOM CANVAS**

Deck • Patio • Window
Awnings • Navy Tops • Side
Curtains • Bimini Enclosures
Marine Upholstery

Cox and Route 48, Cutchogue
631-734-5900

*Chandelier
and Lamp*
RESTORATION
& REPAIR



SUFFOLK DESIGNER LIGHTING
631.283.4800
www.suffolkdesignerlighting.com

SPIRO TILE
Custom Tile Installations

CERAMIC TILE • MARBLE • GRANITE • STONE
Kitchen Counter Tops • Vanities • Fireplaces

WET BED INSTALLATIONS BY EUROPEAN CRAFTSMAN
THREE GENERATIONS EXPERIENCE

LICENSED & INSURED **631-912-7312** FREE ESTIMATES

YOUR AD HERE

\$25 for 1 issue square
\$20 per issue 3+ months
NO ART CHARGES
\$35/double 3+ months

Contact Rita: 631.765.3346
rita.academy@gmail.com

Academy Printing
SERVICES INC.



www.academyprintingservices.com
765-3346 • M-F 8-5, SAT 9-12
42 HORTON LANE, SOUTHOLD

Cardio • Weights • Personal Training
TVs • Showers • Towel Service
— DAY PASSES AVAILABLE —

**FITNESS
ADVANTAGE**

www.finessadvantagenf.com
ROUTE 48 • SOUTHOLD
631 765 4015

CROSSFIT
north tribe



www.crossfitnorthtribe.com
ROUTE 48 • SOUTHOLD

SOUTHOLD FREE LIBRARY

53705 Main Road Southold · southoldlibrary.org · 631-765-2077

Friday Feb. 17, 12:30pm Movie Matinee: "Florence Foster Jenkins" PG-13 In the 1940s, New York socialite Florence Foster Jenkins (Meryl Streep) dreams of becoming a great opera singer. Movie also stars Hugh Grant.

Friday Feb. 17, at 4pm Family Movie: "Robots" PG With the help of his misfit mechanical friends, a small-town robot named Rodney embarks on the adventure of a lifetime as he heads for the big city to pursue his dreams.

Maker Week February 21-24, Tuesday-Friday Call 631-765-2077 to register!

Tuesday-Friday, 9:30-10:30am, Junior Lego Club, Preschool-1st grade

Tuesday, 2-3pm, Ozobots, Grades 2-5

Tuesday, 3:30-4:30pm, Ozobots: A Coding Class, Grades 6 and up

Wednesday, 2-3pm, Origami for kids!, Grades 2-5

Wednesday, 3-4pm, Origami for teens!, Grades 6 and up

Thursday, 2:30-3:30pm, Bristlebots, Grades 3-5

Friday, 10:30am, Maker Week Movie: The Lego Movie, All ages

Friday, 3-4pm, Fidget Friday, Grades 2-5

Saturday, Feb. 25, 2pm Concert NYC-based singer-songwriter Sheri Miller sings original compositions as well as songs by legends like Judy Garland, Patsy Cline, Bruce Springsteen, and The Beatles. *Sponsored by the Friends of Cutchogue-New Suffolk and Southold Libraries.*

Sunday, Feb. 26, 2pm "The Music Lesson: Everything About Music That Isn't Notes..." performed by the Hidden City Orchestra. Music is a Language. It has meaning that is contained in elements other than the notes. Articulation, feel, technique, rhythm, listening, phrasing, space, tone, and dynamics are some of the other elements. Listen how we make good music great. *Sponsored by the Friends of the Southold Free Library.*

Monday, Feb. 27, 7pm "How to be a Google Power User" David van Popering will share Tips and Tricks most people don't know to help you find what you're looking for.

Thursday, March 2, 6:30pm "The History of Ireland Through Music" An evening of history and music featuring Mike McCormack offering narration and bodhran (traditional Irish Drum) accompaniment and John Corr on vocals, guitar, banjo, tin whistle, and spoons. *Sponsored by the Friends of the Southold Free Library.*

FLOYD MEMORIAL LIBRARY

539 First Street, Greenport • 631-477-0660 • floydmemoriallibrary.org

ADULT PROGRAMS

February 6: Board of Trustees Meeting, 6pm

February 11: Lloyd Ziff Photography Book Presentation, 3pm

February 20: Library CLOSED, Presidents' Day

February 24: Brunch Poems, 10:30am

February 26: Prof. Michael Edelson Discussion of *In Cold Blood*, 2:30pm

February 15: Pop Up Library at Orient Country Store, 1-3pm

February 15: Mystery Book Discussion, 3:30pm

February 27: Book Discussion 2pm @ Library, 4pm at Peconic Landing

ONGOING

Sundays, 1pm: Yoga with Lynn Wentworth

Tuesdays, 11am: French Conversation Classes

Tuesdays, 1-3pm: Coloring for Adults

Tuesdays, 6:15-7:45pm: ESOL

Wednesdays, 1-4pm: Scrabble

Thursdays, 10am: Needlecraft Group

Thursdays, 1-3pm: Mah Jongg

February 7 – March 1: ART SHOW by Greenport School Student Artists

Movies - Thursdays, 6pm

February 9: Man Hunt

February 16: 5 to 7 (Potluck Dinner)

February 23: Lizzie

CHILDREN'S PROGRAMS

February 19: Hugs & Kisses Craft, 1pm

February 21: Snow Skiing Craft, 5:30pm

February 28: Legos, Legos, Legos, 3:15pm

ONGOING

Mondays-Thursdays, 3:30pm: Homework Help

Tuesdays, 5:30pm: Drop-In Crafts

Wednesdays, Feb. 8, 15, 10:30am: Toddler Time

Movies: Fridays at 3:30pm

February 10: Finding Dory

February 17: Pete's Dragon

February 24: Kubo and the Two Strings

TEEN PROGRAMS

February 9: Cicut Explore Air Machine, 4pm

February 10, 17, 24: Big Screen Wii, 5:30pm

February 12: Community Service-Toy Cleaning, 2pm

February 14: Books & Cookies, 4pm

February 21: TEEN MOVIE, 11am, *Tyler Perry's Boo! A Madea Halloween*

February 22: Read-in, 10:30am

February 23: TEEN MOVIE, 11am, *Arrival*

February 25: Read & Feed, 3pm

ONGOING

Homework Hangout, 3-4pm, Mondays-Thursdays

MATTITUCK-LAUREL LIBRARY

631-298-4134 • www.mattlibrary.org

Sun., Feb. 5, 2-4pm – Art Reception. Come meet Mother/Daughter photographers, Gayle and Elizabeth Wagner and view their show "Flowers & Candy" on display throughout February. All welcome, refreshments will be available. FREE.

Mon., Feb. 6, 11am – 2 for Books for ages 24-35 months. Enjoy your first story time with your toddler and make a craft. Registration is required. FREE.

Mon., Feb. 6, 1:30pm – Classic Movie Monday. "Out of the Past" with Robert Mitchum and Jane Greer. FREE.

Mon., Feb. 6, 5pm – Make Your Own Lip Gloss for grades 7-12. Use chemistry to create your container of shiny, sweet lip gloss! Registration is required. FREE.

Tues., Feb. 7, 10:30am – Every Voice Matters: The Power of Poetry. Each of four consecutive weekly sessions will explore and celebrate a different aspect of poetry through videos, images and the spoken voice. (*Additional sessions on Feb. 14 & 28, March 7.*) All are welcome. hosted by reference librarian Jerry Matovcik.

Tues., Feb. 7, 2pm – Toddler Lacrosse. (Ages 24-35 mos.) **3pm – Preschool Lacrosse.** (Ages 3-5 years preschool). **4pm – K-1 Lacrosse** (Grades K-1). Each child will hold a "soft stick" and a light weight ball for games and drills. Registration is required. FREE.

Wed., Feb. 8, 9am – Chair Aerobics & Strength with Laurie Short. 9-week session begins. Non-impact class combines aerobic movement patterns while seated in a chair, followed by functional strength training. Bring dumbbells (3-5 lbs) and water. \$45/Mattituck-Laurel residents; \$50/out-of-district. Register in advance.

Wed., Feb. 8, 4pm – Lego K & 1. Use Library Legos to design your own creation, then see it on display. Registration is required. FREE.

Thurs., Feb. 9, 4pm – Robot Bowling for grades 4-6. Knock down the pins using a robot as your bowling ball. You will need to correctly program its path in order to succeed. Presented by The Digital Librarian. Registration is required. FREE.

Thurs., Feb. 9, 4:30pm – Tail Waggin' Tutor. For grades K and up. Read to a dog. Each child will have 15-minutes reading to a dog. Must register. FREE.

Thurs., Feb. 9, 4:30pm – Valentines Cupcake Workshop. Create beautiful cupcakes using professional piping techniques. Register at the desk. \$5pp.

Fri., Feb. 10, 1:30pm – FILM: Queen of Katwe (2016 PG) A Ugandan girl sees her world rapidly change after being introduced to the game of chess. FREE.

Fri., Feb. 10, 5:30pm – Teen Movie Night: The Fault in our Stars. Join Ms. Jaclyn for a movie, pizza and refreshments! Registration is required. FREE.

Sat., Feb. 11, 11am – The Writer's Notebook: Unlocking the Writer within You. Learn strategies for collecting your ideas and observations in a writer's notebook. Notebook will be provided. Registration is required. FREE.

Sun., Feb. 12, 2pm – CONCERT: As Time Goes By: A Valentine's Day concert with Jen Kane. Jen has sung on Broadway, is classically trained, and will present her own radiant rendition of some classic love songs. This event is sponsored by The Friends of the Mattituck-Laurel Library. All are welcome. FREE.

Mon., Feb. 13, 6pm – Library Board of Trustees Meeting. Open to the public. **Thurs., Feb. 16, 9am - 4pm – AARP Safe Driving Course.** For motor vehicle operators age 50 and over. Register in person at the Circulation Desk. \$20 for AARP members, \$25 for non-members, by check payable to: AARP.

Thurs., Feb. 16, 5pm – Teen Chocolate Olympics for grades 7-12. Games and trivia on "all things chocolate".

Fri., Feb. 17, 1:30pm – FILM: The Light Between Oceans (2016 PG-13) A lighthouse keeper and his wife off the coast of Western Australia raise a baby they rescue. FREE.

Fri., Feb. 17, 4:30pm – Teen Minecraft PVP Grades 7–12. Test your combat skills against others on the library's Minecraft server with Ms. Liz! Must register. FREE.

Tues., Feb. 21, 1:30-3pm – Health Insurance Counseling. Individual, confidential, accurate info and guidance for seniors and other Medicare eligible persons. Sponsored by the SC Office for the Aging. Call the circulation desk for an appointment. FREE.

Thurs., Feb. 23, 3pm – Presidential Trivia Contest. Trivia lovers: gather your family and friends for some friendly competition! Teams of three adults/or youth (grades 5 and up) will compete by answering questions in various categories about U.S. presidents. Spectators are welcome. Registration is required. FREE.

Thurs., Feb. 23, 6:30pm – Book Discussion: "Pope Joan" by Donna Woolfolk Cross. This International Bestseller is a work of historical fiction promoting the medieval legend that, in the Dark Ages, a woman sat on the papal throne for two years. Call Bev Wowak, Reader's Advisor for details at 298-4134 ext. 6. Registration is required. FREE.

Fri., Feb. 24, 1:30pm – FILM: Little Men (2016 PG) A new pair of best friends have their bond tested by their parents' battle over a dress shop lease. FREE.

Thurs., March 2, 11am – Senior Singles Meet and Greet: Here's an opportunity for seniors to meet new friends in the comfortable space of their community library. Join reference librarian Jerry Matovcik on the first Thursday of every month for coffee, tea, snacks, and conversation. Participants can be from any library. Family members may accompany the single adult for support. Registration is required. FREE.

Fri. March 3, 5:30–7pm – Art Reception. "The Light Painters", a North Fork based photography club reception. Meet members of the group and view their displayed images all with a "Weather" theme. Refreshments will be available. All are welcome.

Sat., March 4, 10am – Literary Café. Join Bev Wowak for this popular, informal gathering of book lovers; for coffee and talk about all things literary. Open to all. FREE.

Mon., March 6, 10am – Sign-up begins for Spring Youth and Parenting Programs. Register in person or call 298-4134.

ON-GOING CLASSES:

Low Impact Dance Aerobics: Mondays from 9 a.m. to 10 a.m. \$\$

Mahjong: Mondays at 10 a.m. & Tuesdays at 11 a.m. FREE

Apple Users Group: 1st Monday of every month from 6-8 p.m. FREE

Yoga Instruction: Tuesdays at 5:15 p.m. or 6:40 p.m. & Saturdays at 9 a.m. \$\$

English Conversation Group: Tuesdays at 7 p.m. FREE

Chair Aerobics: Wednesdays from 9 a.m. to 10 a.m. \$\$

IN THE LIBRARY'S ART GALLERY:

FEBRUARY: "Flowers & Candy" - Photography by Gayle Wagner and Elizabeth Wagner Award-winning North Fork mother-daughter photography team combine their talents in this sweet treat for the senses. Gayle's stunning floral scenes paired with Elizabeth's intricately-staged sugary confections create a colorful juxtaposition of natural and man-made delicacies.



Avoid the Highway Hassles!

Large, fast, comfortable ferries that will save hours off your trip. Year-round, daily, vehicle and passenger service between Orient Point, Long Island and New London, CT.

Vehicle & Passenger Ferry Schedule

February - April, 2017

NL - New London, CT OP - Orient Point, Long Island, NY

Sailing time is approximately 1 hour, 20 minutes

Feb 1, 6, 7, 8, 13, 14, 15		Feb 2, 3, 4, 5, 9, 16, 27, 28 Mar 1, 2, 6, 7, 8, 9, 13, 14, 15, 16, 20, 21, 22, 23, 27, 28, 29, 30 Apr 3, 4, 5, 6, 10, 11, 12, 18, 19		Feb 10, 12, 17, 18, 19, 20, 24, 25, 26 Mar 3, 5, 10, 12, 17, 19, 24, 26, 31 Apr 2, 7		Feb 21, 22, 23		Feb 11 Mar 4, 11, 18, 25 Apr 1, 8, 13, 20		April 9		April 14, 16, 21, 23, 28, 30		April 15, 22, 29		April 17		April 24, 25, 26, 27	
Departing		Departing		Departing		Departing		Departing		Departing		Departing		Departing		Departing		Departing	
NL	OP	NL	OP	NL	OP	NL	OP	NL	OP	NL	OP	NL	OP	NL	OP	NL	OP	NL	OP
7:00	7:00	7:00	7:00	6:00	7:00	6:00	7:00	6:00	7:00	6:00	7:00	7:00	7:00	7:00	7:00	7:00	7:00	7:00	7:00
9:00	9:00	8:00	9:00	7:00	8:00	7:00	8:00	7:00	8:00	7:00	8:00	7:30	8:00	7:30	8:00	7:30	8:00	8:00	8:00
11:00	11:00	9:00	10:00	8:00	9:00	8:00	9:00	8:00	9:00	8:00	9:00	8:00	9:00	8:00	9:00	8:00	9:00	9:00	9:00
1:00	1:00	11:00	11:00	9:00	10:00	10:00	11:00	9:00	10:00	9:00	10:00	9:00	9:30	9:00	9:30	9:00	9:30	10:00	10:00
3:00	3:00	12:00	1:00	10:00	11:00	11:00	12:00	10:00	11:00	10:00	11:00	10:00	10:00	10:00	10:00	10:00	10:00	11:00	11:00
5:00	5:00	1:00	2:00	11:00	12:00	1:00	1:00	11:00	12:00	11:00	12:00	11:00	11:00	11:00	11:00	11:00	11:00	12:00	12:00
7:00	7:00	3:00	3:00	12:00	1:00	2:00	3:00	12:00	1:00	12:00	1:00	11:30	12:00	11:30	12:00	11:30	12:00	1:00	1:00
		4:00	5:00	1:00	2:00	3:00	4:00	1:00	2:00	1:00	2:00	12:00	1:00	12:00	1:00	12:00	1:00	2:00	2:00
		5:00	6:00	2:00	3:00	5:00	5:00	2:00	3:00	2:00	3:00	1:00	1:30	1:00	1:30	1:00	1:30	3:00	3:00
		7:00	7:00	3:00	4:00	6:00	7:00	3:00	4:00	3:00	4:00	2:00	2:00	2:00	2:00	2:00	2:00	4:00	4:00
				4:00	5:00	7:00	8:00	4:00	5:00	4:00	5:00	3:00	3:00	3:00	3:00	3:00	3:00	5:00	5:00
				5:00	6:00			5:00	6:00	5:00	6:00	3:30	4:00	4:00	4:00	3:30	4:00	6:00	6:00
				6:00	7:00			7:00	7:00	6:00	7:00	4:00	5:00	5:00	5:00	4:00	5:00	7:00	7:00
				7:00	8:00			[8:00]	[8:00]	7:00	8:00	5:00	5:30	6:00	6:00	5:00	5:30	8:00	8:00
				8:00	9:30					8:00	8:45	6:00	6:00	7:00	7:00	6:00	6:00		
										8:45	9:30	7:00	7:00	8:00	8:00	7:00	7:00		
												7:30	8:00						
												8:00	[8:45]						
												[8:45]	9:15						

Schedule subject to change without notice. Call ahead to verify departure times.

Free motorcoach service to



Up to **\$39** Casino Bonus

- \$10 Food Voucher or Free Festival Buffet
- \$20 Bonus Slot Play



Up to **\$40** Casino Bonus

- 1 - \$15 Meal Credit
- 2 - \$10 Free Bets
- 1 - \$5 Free Bet

Individuals must be 21 years of age or older. Must be a Cross Sound Ferry passenger to be eligible for casino bonuses. Passage sold on a first-come first-served basis.

Casino Connections

February 1 - April 13, 2017
Connections aboard auto ferry

	Depart Orient Point, NY	Return New London, CT
7 Days A Week	7:00 AM 9:00 AM	5:00 PM 7:00 PM
Fri-Sat ONLY and on Sun 1/15, 2/19	7:00 PM	7:00 AM Next Day

CHOOSING THE RIGHT BROKER MATTERS



EAST MARION EXCLUSIVE. W#88765
Sublime Peconic Bayfront, 4 Bedroom, 6 Acres with Waterside Pool
MD-LD \$70,000



SOUTHOLD EXCLUSIVE. W#73713
Incredible Sunsets, 4 Bedrooms, Dock, Waterside Pool
JULY \$30,000; AUG. \$35,000



PECONIC EXCLUSIVE. W#60007
Soundfront, 3 Bedrooms
MD-LD \$30,000; JULY - LD \$24,000; JULY \$11,000; AUG. \$14,000



SOUTHOLD EXCLUSIVE. W#96034
Renovated 5 Bedroom Historic Schoolhouse
JULY-LD \$20,000; JUNE \$8,000; JULY \$10,000; AUG. \$12,000



SOUTHOLD EXCLUSIVE. W#95787
Surrounded by bucolic lawns, gardens, and mature trees.
MD-LD \$36,000; JUNE \$10,000; JULY \$15,000; AUG. \$20,000



"There are many real estate agents you could choose to work with - but very few have the track record of success that I've generated over the last 30 years. Whether it's marketing unique properties, negotiating the best deal, or tracking down just the right house for a discerning buyer, I've proven that I'm able to not only meet but exceed expectations every time."

NICHOLAS J. PLANAMENTO
Licensed Associate Real Estate Broker
NJP@TownAndCountryHamptons.com
631.948.0143 (c)

TownAndCountryHamptons.com



EVERYTHING FOR BOATING FUN

ALBERTSON

Marine, Inc.

Full Service Marina & Discount Ships Store

GET 5 YEARS COVERAGE NOW!

For a limited time, receive five years of factory-backed coverage – two years of free Mercury® Product Protection Gold in addition to the three years standard limited warranty – on ALL NEW Mercury Outboards.



Exclusions: All Pacemaker, Mercury Racing, Government, previously registered engines, donations, as well as engines sold for commercial, camp or resort applications, waterski engines and sales/registrations outside the United States and Canada. Also excludes any non-U.S. or non-Canada resident, or address outside of the U.S. or Canada. TwoStroke and Sport Jet engines are excluded from this promotion as well. Any units with a manufacture date prior to 2010 are not eligible. *US MSRP value of 2-year Mercury Product Protection extended service contract for a Mercury OptiMax 250 hp Pro XS. Pricing may vary in Canada.

©2017 MERCURY MARINE. All rights reserved. Reproduction in whole or in part without permission is prohibited.

**CAROLINA
SKIFF**
GO ANYWHERE. DO ANYTHING.™

MERCURY

SMOKER CRAFT
S
FIRST FAMILY OF BOATS

LaserPerformance

SEA CHASER

www.albertsonmarine.com • sales@albertsonmarine.com

61205 Main Road Southold NY, 11971 • 631-765-3232

Accessible by Water 41 04' 34" N/72 24' 16" W