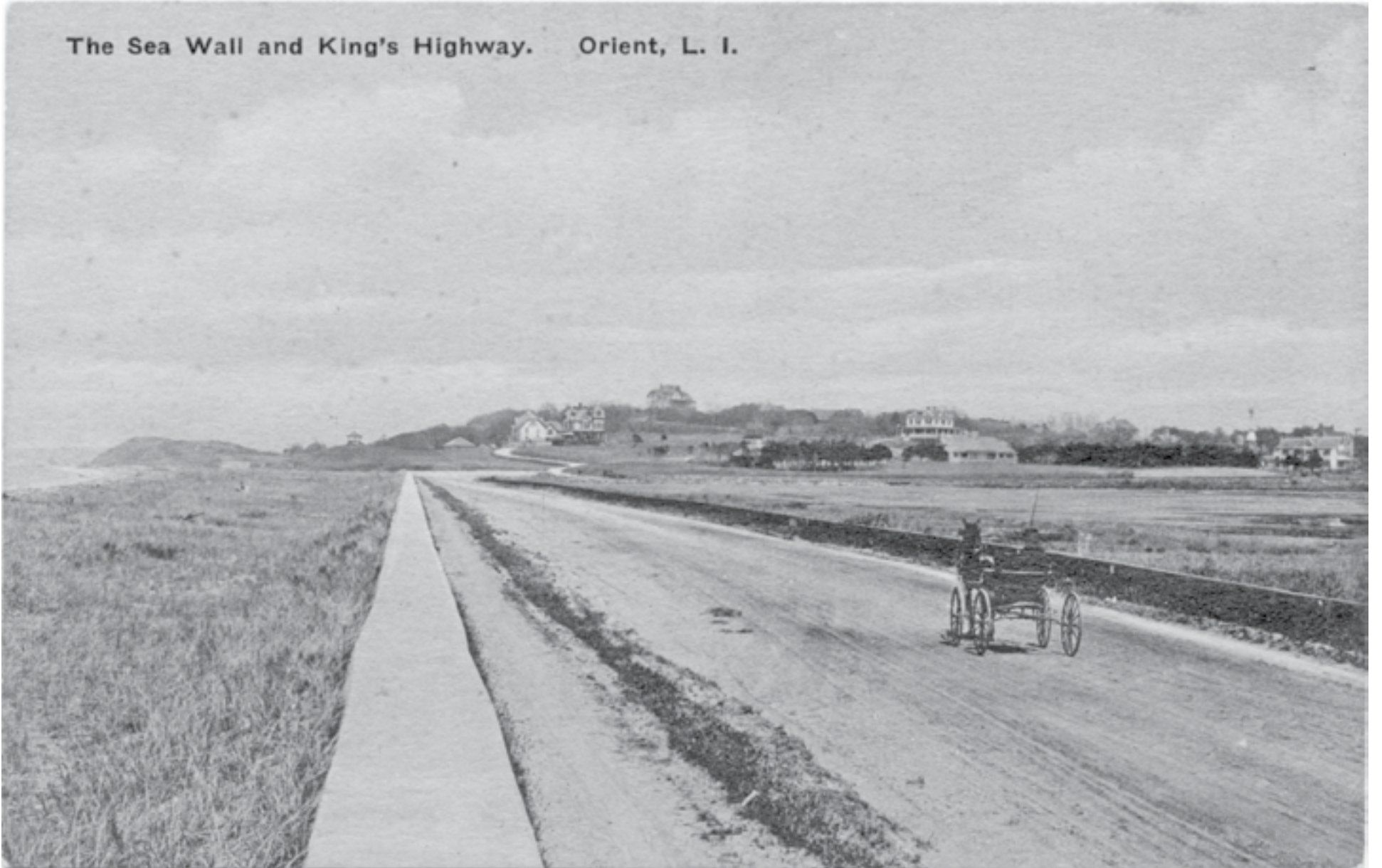


The Sea Wall and King's Highway. Orient, L. I.



*Holiday outfits, pj's and*



*great gifts!*



*Bibs for Christmas!*



*Carol's Kids Corner*  
*tights · socks · shoes · hats · Robeez · blankets*

Tucked inside  
**Bath & Linens**  
of Southold

MAIN ROAD, SOUTHOLD • 765-4100 • Open 6 Days • UPS • MC/VISA

*Decorate your bathroom too!*



*Coordinating shower curtains, rugs and towels, plus shower liners 70"x 72", extra-long 70"x 96", stall 54"x78" and hotel-quality fabric liners.*

**Bath & Linens**  
of Southold





*Wishing Everyone  
a Merry Christmas and Happy  
Healthy Prosperous New Year!*

**Taking holiday orders now!**

**Hot and Cold • Made to Order**

**PRIME RIB • FILET MIGNON**

*Special orders:*

**Crown Roast Pork, Lamb & Fresh Hams**

**Open Christmas Eve 6am to 2pm**

**631-765-3575**

**5574 MAIN ROAD, SOUTHOLD**

**CLOSED JANUARY & FEBRUARY, RE-OPEN MARCH 10th**





Enlarged postcard of Orient Harbor looking north toward the causeway circa 1880.

A festive advertisement for Santa's Christmas Tree Farm. The background features a branch of a Christmas tree with several red circular ornaments. The ornaments contain the following text: "CHICKENS HUSKYS", "SHEEP LLAMAS", and "CUT YOUR OWN CHRISTMAS TREES!". A larger red circle contains the text "Bouncy houses, hot cocoa, cider &amp; s'mores!!!". A green starburst contains the text "FREE PHOTOS WITH SANTA FRIDAY'S 4-7 PETS WELCOME SAT &amp; SUNDAYS 10-5". A yellow starburst with a musical note icon contains the text "Brady Rymer! Dec 8th 12-3". At the bottom right is a large red circular logo with a green Christmas tree silhouette and the text "SANTA'S Christmas Tree Farm". The bottom of the advertisement has a gold banner with the text "631-735-9242 • OPEN 7 DAYS A WEEK 10-5 • 30105 MAIN ROAD, CUTCHOQUE".

631-735-9242 • OPEN 7 DAYS A WEEK 10-5 • 30105 MAIN ROAD, CUTCHOQUE





# FEATHER HILL

53345 Route 25  
Main Road  
SOUTHOLD  
NY 11971

East End Insurance Agency believes in going above and beyond to fulfill personal and commercial insurance needs.



## HOME

You can achieve ultimate peace of mind in the comfort of your home when you hold a custom-tailored home insurance policy.



## AUTO

Allow us to customize an auto insurance policy that optimizes your security on the open roads.



## BUSINESS

With the right combination of business insurance policies, you can be fully confident in the security of your biggest investment.



## BOAT

To ensure your safety on the open waters, seek the protection you deserve with a customized boat insurance policy.



## FLOOD INSURANCE



## UMBRELLA COVERAGE



## EQUINE COVERAGE



## MOTORCYCLE INSURANCE

**Need a quote? We're here to help.**



# EASTEND

## INSURANCE AGENCY

A DIVISION OF RMS INSURANCE BROKERAGE, LLC

**CALL US FOR A QUOTE, OR VISIT: [eastendagency.com](http://eastendagency.com)**

### PERSONAL LINES:

Stephanie Zambito

631.765.3811 x233

[SZambito@rmsinsurance.us](mailto:SZambito@rmsinsurance.us)

### COMMERCIAL LINES:

Danielle Nuhfer

631.765.3811 x216

[DNuhfer@rmsinsurance.us](mailto:DNuhfer@rmsinsurance.us)

Open Monday through Thursday 8:30am to 4:30pm, Friday 8am to 4pm  
53345 Main Road • PO Box 1406 • Southold, NY 11971 • fx: 631.765.3846



Paumonok Inn, Southold, L. I.



Another enlarged postcard featuring the Paumonok Inn situated high on Horton Point, Southold. This country getaway advertised mostly in the Brooklyn Eagle about the soothing sea breezes and charming country life. Lighthouse Road was commissioned by several local families in that area around 1886 when the road was constructed. The Paumonok Inn burned to the ground, as did so many of the local resort buildings on the North Fork and Shelter Island.



# FEATHER HILL

53345 Route 25  
Main Road  
SOUTHOLD  
NY 11971



## Beachy

APPAREL & GIFTWARE

Feather Hill • 53345 Main Rd • Southold • 631.876.5666







# FEATHER HILL

53345 Route 25  
Main Road  
SOUTHOLD  
NY 11971

*Roger's 2nd Annual*  
**Winter Snowfall Madness**  
*A Southold Tradition*



**If it Snows 3 Inches or More\*  
Your Holiday Purchases are FREE!!!**

Roger will  
**REFUND 100% - COLD HARD CASH**  
*of your purchase price\*\**

**Starts Thursday, November 21**



**Your Home for Fine Jewelry & Custom Designs**

**Feather Hill, Main Road  
Southold • 765-1061**

**HOLIDAY HOURS:**

Starts Sunday, December 8  
(Monday - Saturday) 9 a.m. - 6 p.m.  
Sunday Dec. 8, 15 & 22 11 a.m. - 4 p.m.  
Tuesday, December 24, 9 a.m. - 5 p.m.

**MOST CREDIT CARDS ACCEPTED**



\*As measured at Brookhaven Airport and Anthenium Analytics. \*\* If it snow three inches or more on December 31, January 1st, January 2nd, or January 3rd (customer chooses one date per transaction) from 6 p.m. until midnight, Roger who is the president of Satnick Jewelers will refund 100% of the purchase price (not including the tax) in cash. Customers must retain their receipts and purchases made after Dec. 20th, your snow date will be Dec. 31st. Certain restrictions apply. Promotion ends 12/24/19, 5 p.m.





The importance of this photo is the view of the Claudio building where the bay reaches under the dining room. This speak easy had a door through the floor behind the bar where unloading the illegal liquor was a frequent happening during prohibition.

# O'NEILL OUTDOOR POWER

**BRIGGS & STRATTON**

®

**STANDBY  
GENERATORS**



## THE SMART CHOICE.

Durable backup power for businesses and all homes.

Guard against losses due to power outages with a

**BRIGGS & STRATTON®**

**5**  
YEAR

Parts • Labor • Travel  
Limited Warranty

### Unique Airflow Technology

- Making these models 50% quieter than most portable generators
- The unique design pushes engine exhaust out the front, directly away from your home

### Flexible Placement

- Approved for installation as close as 18" to a building

### Symphony® II Power Management System

- Customizable to your home's needs
- Automatically balances the power of your home's electrical load including high wattage items like air conditioning units and electric ovens
- Offers whole house power with a more affordable home generator

### Commercial-Grade Briggs & Stratton Vanguard™ Engine

- Powerful V-Twin OHV engine
- Easy conversion between natural gas (NG) and liquid propane vapor (LP) during installation

### Quality Clean Power

- Ensures your electronics are safely powered

### Corrosion Resistant Enclosure & Base Options:

- Automotive grade galvanized steel enclosure and base
- Aluminum enclosure and stainless steel base certified to withstand hurricane-force winds up to 175 mph
- Both enclosure materials utilize powder-coated paint for years of protection against chips and abrasions



1508 MAIN RD., JAMESPORT • 631-722-3595 • [www.oneilloutdoorpowerequipment.com](http://www.oneilloutdoorpowerequipment.com)



SAVE BIG ON NEW 2019 Dodge, RAM, Chrysler & Jeep Vehicles!

**We Can't Give It To You For Free. But You Can Get It For FREE!\***

It's THAT Time Again! Get a New 2019 or 2020 RAM Pickup or ProMaster for FREE\*\* - With the Section 179 Tax Deduction!

**PLUS YOU PAY WHAT WE PAY!** DETAILS BELOW!

2019 RAM 2500 HD SECTION 179 ELIGIBLE



**MOST\*\* RAM PICKUPS ARE SECTION 179 ELIGIBLE! 1500's through 5500's!**

**LOWEST PRICES OF THE YEAR ON PRETTY MUCH EVERYTHING!**

GET EMPLOYEE PRICING PLUS ON 2019 Model Year: Jeep Grand Cherokee, Cherokee, Compass & Renegade; Dodge Durango & Grand Caravan; Chrysler Pacifica; RAM Heavy Duty\*\*\* and Light Duty Classic & New Body Style AND 2020 Model Year Pacificas, Durangos, Grand Cherokees, Compass and RAM 1500's\*\*

**MULLEN MOTORS**  
East Main Street, SOUTHOLD • 765-3564  
www.mullendealsoftheweek.com • www.mullenmotors.com

Chrysler, Jeep, Dodge, SRT and Ram are registered trademarks of Chrysler Corporation, LLC.



**RON MORIZZO**  
Kitchens & Baths INC.

*Wishing you a Happy Holiday Season and Wonderful New Year*

---

HOME IMPROVEMENTS • BATHROOMS  
KITCHENS • COUNTER TOPS • TILE  
RENOVATIONS  
CARPENTRY • WINDOWS • DOORS

---

631-765-5772 • [www.RMKB.net](http://www.RMKB.net)

Showroom - North Rd. Commons #19  
Route 48 & Cox Lane, Cutchogue

Licensed & Insured  
SC #H16772  
SH #L001935



**\*HAPPY\***

**Holidays!**

*From our Family to Yours!*

The **NYCB** Family of Banks®

New York Community Bank • Member FDIC and its divisions -  
Queens County Savings Bank • Roslyn Savings Bank • Richmond County Savings Bank  
Roosevelt Savings Bank • Atlantic Bank • Garden State Community Bank  
Ohio Savings Bank • AmTrust Bank